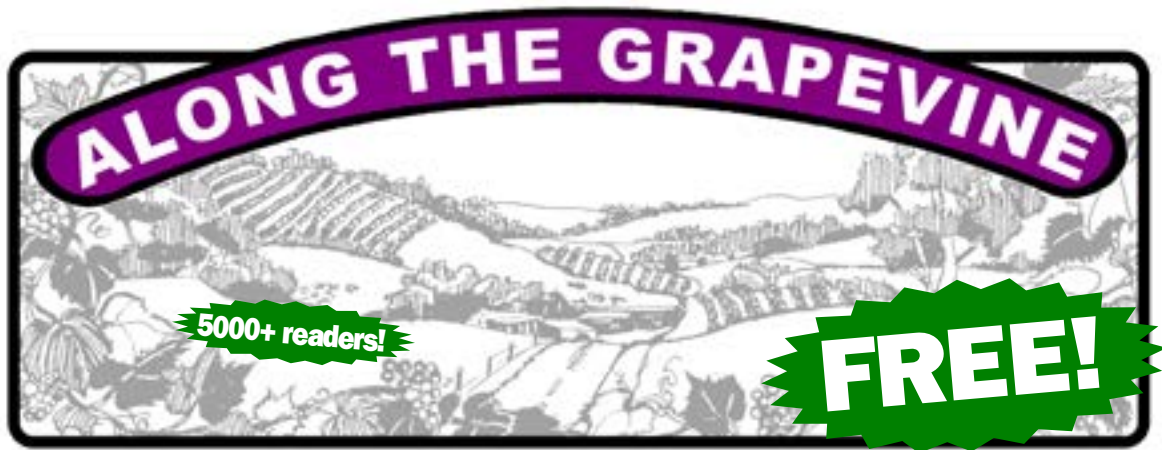


**Maintain All Fly Screens**  
 From Security Doors to Fly Screens, we have all your needs covered.



Chris - 0417 216 434  
 David - 0434 672 804  
 Fully Insured

Find us on Facebook  
 @maintainallfsr



Volume 24, Number 19

October 12th to October 25th, 2019

PO Box 47, Lobethal

Tel. 0419 034 126

Email. [editor@alongthegrapevine.com](mailto:editor@alongthegrapevine.com)

# CFS Recruiting Now



**By Kendrea Rhodes** - The emergency services are a blessing. Knowing they will respond quickly creates that sense of security and freedom we're accustomed to. South Australians have a deep respect for the Country Fire Service, and quite right - these are volunteers who drop

everything and run towards danger, when everyone else runs away. And just in case you missed it: they are volunteers.

**CONTINUED ON PAGE 5**

*Frank and Natalie Regan's wedding at the Littlewood Agapanthus Farm in 2017. CFS Littlehampton Brigade Captain, Frank Regan and other CFS members will attend the CFS Recruiting Bonfire at Littlewood Agapanthus Farm: Saturday 12 October, 3.30pm - 8.30pm. Photo by Colin Townley, Evermore Photographics.*



**Mt. Pleasant Crash Repairs**  
 Recommended repairer for **ALL** major Insurance Companies

- BAKING OVEN FOR FACTORY FINISH
- COURTESY CAR BY ARRANGEMENT
- 24 HOUR WINDSCREEN REPLACEMENT
- ALL TYPES OF VEHICLES REPAIRED



**Mt. Pleasant Mechanical Centre**  
 Now specialising in heavy vehicles, including caravans, buses and trucks

**FREE CALL 1800 801 180**  
 9 Railway Terrace, Mount Pleasant  
**24 HOUR - 7 DAYS TOWING**






# “YOU MATTER TO GOD”

## Kersbrook Church of Christ

Contact Pastor David on 0458 589 996 or someone at your local church to find out more of God’s love for you.

“WHAT IS OUR WORLD COMING TO?”

The Bible, written over a period of between two and four thousand years ago has quite a lot to say about ‘what our world is coming to.’

In the Gospel of Matthew, chapter 24, Jesus is asked by His disciples about the end times and when He will come again.

Matthew 24:21-22

(NKJV), *For then there will be great tribulation, such as has not been since the beginning of the world until this time, no, nor ever shall be.*

*And unless those days were shortened, no flesh would be saved; but for the elect’s sake those days will be shortened.*

Jesus is saying that there will be a worldwide catastrophe which would kill everyone and

everything that is alive. But God will step in to prevent this from happening. The Old Testament prophet Zechariah writes of a way that this catastrophe may come about.

Zechariah 14 (NKJV), *And this shall be the plague with which the Lord will strike all the people who fought against Jerusalem:*

*Their flesh shall dissolve while they stand on their feet, their eyes shall dissolve in their sockets, and their tongues shall dissolve in their mouths.*

In a time when wars were being fought with spears and swords how could they even imagine a time when nu-

clear weapons could bring about the end of the world.

The recognition of Israel as the historical homeland of the Jewish people by the United Nations in 1948 and their return is an undeniable example of the accuracy of the Bible.

The countries surrounding Israel will not accept the Jewish state and have gone to war many times seeking to get them out, but God has miraculously prevented this from happening. The return of the Jews to Israel is also a strong indication that we are in the last days spoken of by Jesus.

But even without the evidence of the Bi-

ble it is surely obvious that our world is in a lot of trouble both environmentally and politically.

I have written this editorial because I believe that the time is running out for people to place their faith in the Lord Jesus as their Saviour. This scripture tells us that God’s patience will eventually run out.

2 Peter 3:9 *The Lord isn’t slow to do what he promised, as some people think. Rather, he is patient for your sake. He doesn’t want to destroy anyone but wants all people to have an opportunity to turn to him and change the way they think and act.*

This quote from Billy Graham encourages those who have placed their faith in Jesus. “I’ve read the last page of the Bible. It’s all going to turn out all right.” You really do matter to God.

**DEADLINE**  
 For next issue, ads & editorial  
**Tuesday, October 22nd 2019**  
 Paper out: **Saturday, October 26th, 2019**

**BIRDWOOD  
 NEW  
 CLOSING TIME 9PM  
 COMMENCING 14 OCT 2019**

**Klose's**  
 SUPERMARKETS  
*Truly Local*

**SHOP ONLINE  
 KLOSE.COM.AU**

**OPEN EVERYDAY  
 7.30AM - 9PM**

**BALHANNAH | BIRDWOOD | LITTLEHAMPTON  
 LOBETHAL | WOODSIDE**

*Closed Christmas Day*

# Snap Print Pot Sculpt 2.0

## TOP OF THE TORRENS GALLERY

Snap Print Pot Sculpt 2.0 is the title of the current exhibition at Top of the Torrens Gallery in Birdwood, which was opened by Alana Preece during September. She congratulated the 20 exhibiting artists for their magnificent, contemplative and thought provoking works, saying that when she first viewed the work she felt the universal power of image conveyed through original art and that she immediately felt a connection to all the artists through their work, adding that in this fast paced, technologically-driven modern world, original art is a wonderful antidote. Original art offers us an opportunity to see things from another perspective, a glimpse into the mind of its creator and a connection to a bigger story, which is good for our heart and soul. An exhibition of original art offers an opportunity to slow down, take time out, to socialize, network or quietly think about and reconnect with our core values. Alana went on to say that when she encountered these works she felt the artists' raw, honest and earthy encounter with their subject, materials and proc-



ess and was reminded of her lifelong connection to the Australian landscape, culture and history. She was reminded by these artworks that we are all connected... connected to each other, connected to everything that has gone before us and connected to the land we stand on. Amazingly enough, these 20 artists, young & old (19 - 80+), emerging & established, professional & hobbyist, all with very diverse backgrounds, without knowingly conspiring, are all showing us their connection to this country, what they value, what inspires

them and what living here means to them. Many of the works have an obvious connection to the land e.g. the beautifully turned River Redgum by John Ragless; the wonderful landscape and still life photography of several artists, and Leon Holmes lively wire sculptures of a group of Australian aboriginals dancing. Even works that don't immediately appear to be images derived directly from the land, the natural world or our culture, still relate to it and seem to be inspired by it e.g. Mike Painters whimsical ce-

ramic fairies are Eden Valley Fairies! And Josie Oswald's Surfers Paradise skyline (reduced to black and white) looks remarkably like a rocky out crop. Photography, printmaking, pottery and sculpture, are not the usual focus in galleries. In showcasing these mediums this exhibition presents us with an opportunity to look with more than our eyes, an opportunity to awaken more of our mind and our senses. Artists often use photos to provide reminders of inspiration or to document details, but the artists exhibiting photos here, have in essence, put a frame around a particular scene which captured their spirit or spoke to them in some way. They haven't wanted to change the image in any way. These photographic images of the natural world around them, communicate thoughts, ideas and feelings in an emotional and sentimental way. In contrast, printmakers take an image, pare it back and simplify it to refocus on elements that are more important to their vision and communication. The prints of Tahlia Dawson (pictured left), Sarah Fawcett, Cath Watkins and Kaitlyn

Havers are concerned about the overall design of the piece, communicating through a universal language of shape, line and colour. Potters, using ancient techniques, fashion clay that's been dug from the earth, into functional forms and whimsical sculptures, which are then baked by fire to preserve their character and usefulness. Joe Dennis's functional vessels are shaped by history and decorated with colours and images inspired by her love of the land. Ann Beacham has mounted her glass fused pieces on natural materials - rock and vine root, giving them an obvious connection to the earth. Nathan Modra and Stephen Hausler have repurposed pieces of used steel. These recognizable pieces have already had a long life as parts of tools or machinery that served someone well, in their daily life on the land. In upcycling these pieces, the life of the old pieces continue indefinitely. Nathan's 'monsters', as he calls them, reminded Alana of Sydney Nolan's Ned Kelly painting series.

Gallery hours are Wednesday to Sunday, 11am to 4pm.



**Mt. Pleasant Mechanical Centre**

Now specialising in heavy vehicles, including caravans, buses and trucks

**FREE CALL**

**1800 801 180**

9 Railway Terrace, Mt Pleasant

**RAA**

APPROVED  
MECHANICAL

**10% OFF**

**ALL TYRE SALES!**

Offer valid until October 31st, 2019



## Sellers have Something to Sing about this Spring

For most people, buying and selling real estate is an exciting, life-changing event. **August** has certainly been an **exciting month** for 20 of our vendors who not only went *Under Contract*, they collectively **saved almost \$35,000 in marketing fees.**

WHY? Because CE Property Group only receives commission for selling a property. **What a great Spring bonus!**

If you are thinking of selling your home, one of our Property Sales Specialists would be happy to sit down and speak with you directly about selling this Spring.

**CALL NOW to arrange an appointment.**

 0488 972 888

 [cepropertygroup.com.au](http://cepropertygroup.com.au)

 @CEPropertyGroup

Birdwood • Mannum • One Tree Hill  
[mail@cepropertygroup.com.au](mailto:mail@cepropertygroup.com.au)  
RLA100925

“  
**26**  
Formal Offers  
made on  
Properties”

“  
**20**  
Properties  
Under  
Contract”

“  
**\$34,280**  
SAVED BY VENDORS  
because we paid the  
marketing costs”

\*Figures relate to CE Property Group's performance in August 2019



**CE PROPERTY**  
GROUP

*Real Estate with a difference!*



# CFS Recruiting Now

CONTINUED FROM PAGE 1

'The CFS are more than a bushfire service ... we are community based for the community,' said Brigade Captain, Frank Regan. The Littlehampton CFS are a multi-hazard fire service on call 7 days a week, operating from a duty roster. Anyone new to the area might not understand the extent of situations the CFS attend, which vary between grass and scrub fires, bushfires, structure fires, vehicle accidents, hazardous materials and alarms.

The Littlehampton CFS station requires approximately 40 firefighters and a few administration staff to run effectively. Frank said they only have half the fire-

fighters they need to cover the forecast hot summer ahead. They are desperate for new recruits to cover their busy area which includes schools and childcare centres, as well as bushland.

Firefighter training occurs after the completion of criminal history checks, child protection checks and an initial six-week trial period. Recruits then complete the Basic Firefighting Course held at the CFS State Training Centre in Brukunga. Once qualified, the minimum commitment for firefighters is attendance at 30% of incidents and training per year.

Tracey and John Koumi, proprietors of the Littlewood

Agapanthus Farm, will light a bonfire on Saturday 12 October (3.30pm to 8.30pm) under the watchful eye of their local CFS. Tracey said the CFS have been so helpful with advice and hands-on work around the Agapanthus Farm over the years that the Koumi's decided they want to give something back. And what the CFS need most are more volunteers.

Tracey said, 'we value the CFS so very much and are worried about the summer season coming.' Tracey and John bought the 20-hectare property in Littlehampton three years ago. The gardens are well established, boasting over 100,000 Agapanthus of 16 different varieties, including the rare Guilfoyle

(deep purple) and the Albo Roseus (white with pink tips). It's a beautiful place for a wedding and many have tied the knot there, including Littlehampton CFS Brigade Captain, Frank Regan.

Come along to the safest bonfire you can possibly attend. There will be CFS discussions, demonstrations, recruitment, sausage sizzle, wood oven pizza, Adelaide Hills wine, live music, Smokey the Koala, fire truck inspections, a walk around the gardens and children's activities. All funds raised will be donated to the CFS. If you are interested in joining the Littlehampton CFS, please call Frank Regan on 0411 105 433 or visit the CFS website for more information: [cfs.sa.gov.au](http://cfs.sa.gov.au).



VFR4529812

**SA Papercraft Fair**  
Sunday 27th October 2019  
10am to 3pm

**Enter the free raffles  
on the day \$5.00 entry  
(Children FREE)**

**Marion Leisure and  
Fitness Centre**  
Cnr Oaklands Rd & Rosedale Ave  
Morphettville, SA

**STEVE GRACE**

**60<sup>TH</sup> BIRTHDAY  
CONCERT  
AT  
SPRING HEAD**

**Saturday 2nd November**

---

**Steve Grace**  
is an international award winning Country / Rock  
and Gospel artist with 20 albums  
and a million miles of concert tours behind him.  
Communicating to thousands of people each year,  
his tours literally go anywhere and everywhere.  
[stevegrace.com](http://stevegrace.com)

---

**His only Concert near Adelaide!**

**\$10 admission**  
includes first sausage in bread!  
**6pm BBQ tea available**  
**7pm Concert**  
**Spring Head Hall**  
280 Springhead Road Mount Torrens  
Bookings to Kym Gladigau 0414 59 66 22

# Choir Cecilia in Concert 2019

Sunday, 10th November from 2.30pm at Newland Uniting Church, 30 Victorial Street, Victor Harbor and Sunday, 24th November from 7pm at Our Lady of Mercy Catholic Church, Mann Street, Mt Barker.

Tickets are \$20 (at the door) and concessions/ANCA members \$15, with afternoon tea/supper included.

The Choir performances will include works by Handel, Mozart, Schubert, Bach, Webb, Henry VIII and Scheidt.

Musical Director is Peter Webb OAM, with accompanist Heather Elliott and guest artists Kim Worley (Tenor) and Hannah Kovilpillai (Oboe).

For further information please contact Jon on 0428 105 164.



## You Can Grow Native Food Plants in Your Backyard

Native foods have intense and intriguing flavours and are becoming more common in Australian cuisine. Many of the edible food plants can

be grown at home - even in the hills.

Neville Bonney is the author of "Knowing, Growing and Eating Edible Wild Native Plants"

and is the go to person to learn about the various edible native foods. Neville will be talking about the different plants, the fruits and how to cook with them including seaweed and fungi, at the **Hills Environment Centre, 4 Crescent Drive, Norton Summit on Sunday October 20<sup>th</sup>.**

The workshop will run from 10am - 3pm and includes several tastings - think of Quandong gelato, muntries jam or wattle seed bread.

The cost is \$20 per person which includes the multiple tastings, tea/coffee and light snacks.

Neville will also discuss how the first peoples used particular plants and compare its use in modern cuisine. The workshop is limited to 25 people so email [valhunt@ahnrc.org](mailto:valhunt@ahnrc.org) now to reserve your seat.

## Women's Golf Clinics

Are you new to golf, or have played previously and want to refresh your skills?

The Aston Hills Golf Club at Mt Barker will be conducting women's golf clinics convened by our accredited PGA coach, Connor Chant.

The clinics will be held each Thursday over four weeks, commencing on the 31<sup>st</sup>

October for one hour each week.

The cost will be \$50.00 for all four sessions or \$15.00 for one clinic.

If you are interested please contact the Pro shop on 8391 0547 for further information or to make a booking. The club is situated in Mt Barker at 435 Bald Hills Road.

**ADELAIDE HILLS BASED**

**Nigel Birch Electrical**  
Industrial - Commercial - Domestic - Rural

Nigel Birch  
ABN 728 647 92809

Mobile: 0403845035  
[njlbirch@dodo.com.au](mailto:njlbirch@dodo.com.au)

All types of electrical work.....  
"A" Class Electrician, 35 yrs exp.

**SPECIALISING IN**  
SWITCHBOARD INSTALLS AND UPGRADES.  
SHED WIRING.  
UNDERGROUNDS.  
SHOP REFITS.  
LED LIGHTING UPGRADES.  
JOBS SMALL & LARGE.

**EXPERIENCE IN ALL FACETS OF THE ELECTRICAL TRADE. WE WORK TO A STANDARD & THRIVE ON RETURN BUSINESS.**

**THERMAL IMAGING  
RCD TESTING & AUDITS**

**WOMEN'S GOLF CLINICS**  
with PGA Assistant Professional  
**Connor Chant**

**PGA** **on course**

9.30am - 10.30am  
Thursdays for 4 weeks:  
• 31-Oct-19  
• 7-Nov-19  
• 14-Nov-19  
• 21-Nov-19

**\$15 per session**  
or  
**\$50 for the whole clinic**

**ASTON HILLS GOLF CLUB**  
*at Mount Barker*

Enquiries: 8391 0547 - opt 2 for the Pro Shop

435 Bald Hills Road, Mount Barker 5251  
[www.astonhillsgolfclub.com.au](http://www.astonhillsgolfclub.com.au) e: [admin@astonhillsgc.com.au](mailto:admin@astonhillsgc.com.au)

# Ashgrove Iris Garden

**53 - 55 ALBERT STREET, GUMERACHA**  
**Saturday 26<sup>th</sup> & Sunday 27<sup>th</sup> of October 2019, 10am to 4.30pm**

Congratulations to Ashgrove Iris Garden - for 20 years this year, the owner has generously opened the Ashgrove gates and shown her beautiful and exceptionally well-maintained garden to thousands of visitors, while also raising funds for a range of charities!

Ashgrove Iris Garden is a relaxed, pretty, one-acre country style garden with meandering pathways, plenty of garden seating and many "old fashioned" and unusual plants making this a charming garden to visit. The garden is well established with most plantings 20 or more years old and includes six

very large old ash trees. There are over 900 named varieties of bearded iris and more than 200 roses, with mass plantings of irises providing a kaleidoscope of stunning colour each spring. Focal points in the garden include a long lawn stretching to an elongated urn; a tiny 'Summer House' nestling amongst the trees and shrubs; David Austin roses encircling a classic water feature. A concrete rainwater tank at the rear of the house has been boldly painted with a colourful Art Nouveau inspired mural of the four seasons in the garden. The tank artist is from

Lobethal. The woodland inspired section of the garden includes hydrangeas, hellebore, self-sown aquilegias, native violets and much more! Espaliered fruit trees line the western fence, and chickens and ducks are used to control garden pests such as snails and grubs in the garden.

The garden owner was named the ABC Gardening Australia Gardener of the Year in 2013. A beautiful garden and a pleasure to visit!

**Extra activities:** Artist painting and art for sale; display of blacksmith-built garden furniture and art, by

Farmweld; Devonshire teas, iris plants for sale.

**Please Note:** The garden has two large open ponds and some steps.

**The entry fee is \$8.00 per person for adults (Open Gardens SA Members \$6.00); children under 18 are admitted free, limited concessions available.**

## A STREET STALL

will be held on Friday, October 25th in front of the Toppe Shoppe general store at Gumeracha, between 8.45 am and 11.45 am.

Come along and buy homemade cakes and biscuits, and other produce, plants and bric-a-brac.

Proceeds from the stall will go to the Bible Society, to enable it to provide Bibles to people in counties where they are needed.

## Karate / Self Defence

Learn the old way  
 Traditional Values and Teachings

FAMILIES WELCOME

Minimum age applies

**Mondays at Birdwood Institute Hall  
 Wednesdays at Oakbank Soldiers Memorial Hall**

Phone 8389 7644 bh / 0412 057 762



## LIONS SHOW & SHINE

Shannon's Memorial Cruise & Car Boot Swap Meet

**November 10th, 2019**

10.30am to 3pm

Gumeracha Sporting Oval

If you have anything to sell and it can fit in your car boot, then enter our Car Boot Swap Meet and turn those parts into cash!

- The Lincolns
- DJ Peter Panagaris
- Rock & Roll dancing
- Retro fashion parade
- FREE Rocker Cover Races
- FREE Retro Family Fun Events
- FREE giveaways by Mr Fruchoc
- Racing Cars and Bikes on Display
- Food & Drink Stalls
- Free Skin Cancer Screening



Donations presented to Camp Quality and gifts to the View Club.  
 We thank you for your kind support!

Public entry by gold coin donation. Participant entry \$15 per vehicle.

For further information, please contact:

Ray Johnson - 0413 277 191 or gumerachashowandshine@gmail.com

Peter Panagaris - 0403 328 910 or peterpan@bigpond.net.au

www.gumerachashowandshine.org



## Barb's Bowen & Massage

Integrated Natural Therapies

Barb Collins Dip BT

Terlinga Road, Tungkillo

Mondays, Tuesdays,  
 Thursdays and Fridays, 9am-5pm

- Bowen / Massage
- Mayan® Abdominal Massage
- Lifeline Kinesiology
- Oncology Massage
- DoTerra® oil massage
- Needle Less Acupuncture
- Detox Foot Spa

• Pensioner Discounts

**0437 387 070**

Or: 8568 2547 A/H,  
 www.barbsbowen.com.au

# printing

---

- business cards
  - fliers & brochures
  - invoice/statement books
  - fridge magnets
  - stickers & labels
- 

## special

1000 full colour, gloss, single sided business cards

**\$165.00** inc GST

---

## fridge magnets

business card size (89mm x 54mm),  
full colour printing with rounded corners

|      |               |      |              |      |              |
|------|---------------|------|--------------|------|--------------|
| 250  | <b>\$242</b>  | 500  | <b>\$319</b> | 1000 | <b>\$418</b> |
| 2000 | <b>\$517</b>  | 4000 | <b>\$715</b> | 6000 | <b>\$913</b> |
| 8000 | <b>\$1100</b> |      |              |      |              |

Other sizes include: 50mm x 70mm and 168mm x 78.5mm

Prices include GST.

---

Along the Grapevine

mob. 0419 034 126 email. [editor@alongthegrapevine.com](mailto:editor@alongthegrapevine.com) PO Box 47, Lobethal SA 5241



# \$5 Classifieds

## TRADES & SERVICES



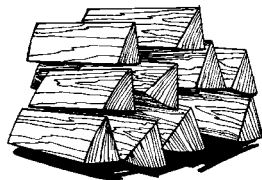
**WAYNES COURIER SERVICE** - Fast reliable service anywhere in the Barossa and northern suburbs. 1 tonne ute available offering fast affordable pick up Saturdays and Sundays ebay/gumtree/store purchases. **Phone Wayne 0431 475 580**



**K9 Kut n Dry** - Dog Grooming, Clipping, Hydro-Bathing. Vet Nurse with 30 years experience in grooming and handling animals. Phone Kerry on 8569 1829 or 0417 856 202 - Gumeracha



**HOWES PAINTING**, 40 years experience! Residential, Commercial, Maintenance, FREE QUOTES. Phone Terry on 0413 277 172



**Sick of splitting Firewood?** I will come to your property to cut and/or split your felled/fallen or salvaged wood. Call Angus on 0412 395 017. Fully Insured.



**MURPHY FRAMING, Birdwood.** Artwork, 3D objects, Needlework, Mats. 600+ frame choices. Conservation options. Easier selection - Visualisation program gives completed frame preview. **WATER-COLOUR CLASSES**, Beginners Welcome. Enquiries: 0402 594 354



**Tight Access Earthworks Servicing the Adelaide Hills.** Specialising In Tight Access Work. Excavator Kanga Ditchwitch Tipper Skidsteer Mini Dumper. Trenching, Post Hole Digging, Drainage, Driveways, Pave and Concrete Prep, Retaining Walls, Site Leveling, Rubbish Removal, Handy Man and Property Maintenance. Call Brett for a Quote on 0414838976



★★★★★★★★  
**Supreme Painting** 35 years experience. Prompt and Reliable. Interior and Exterior. Wallpaper removed. Colour Consultant. Quality service. Seniors Discount. Free quotes. Lic 19836. Mobile 0419 848 339  
★★★★★★★★



**GREENIE'S Small Engine Repairs.** Service & Repairs to: Lawnmowers, Ride-ons, Brush Cutters, Chain Saws, Water Pumps etc. Phone Graham Green, 0428 891 542. 3 Smithers Court, Kersbrook.

**Mat's Home & Garden Service.** Accredited, great rates. NO JOB TOO SMALL! For all your Car washing, Window/Spring cleans and Handyman needs. Mathew - 0438 846 222



**FIREWOOD MADE EASY.** 10 years experience splitting/cutting wood. Servicing Adelaide Hills area, using quality machinery, no job too big or small. Call Geoff on 0409 001 421



**J S CARPENTRY BLD LIC. 28 63 85** All Aspects Of Quality Carpentry Call **Justin Sheedy 0400 226 164** Prompt, Reliable & Quality Service. FREE QUOTES.

**Advertise here \$5 for 30 words \$8.50 with logo/photo.**

**Hills Fencing** - We supply quality affordable fencing throughout the hills and surrounding areas. Custom designed timber gates and entrances. Horse arena mirrors, horse yards, paddocks and all general timber and wire fencing. Retaining walls, picket and paling fences. Tight access mini digger for post hole drilling/trenching, bucket work/site clean up. **Phone Wayne Copping on 0428 821 005**

## printing

business cards  
fliers & brochures  
invoice &  
statement books  
fridge magnets  
stickers & labels

**0419 034 126**

Email: editor@alongthegrapevine.com

## TERRY WARKE UPHOLSTERY

97 Main Street, Woodside  
Phone: 8389 7644 / 0419 864 606

For All Your Upholstery Requirements

Open Tuesday to Friday & Saturday mornings  
CLOSED SUNDAYS & MONDAYS

# \$5 Classifieds

## COMING EVENTS



**LYNDOCH COMMUNITY MARKET** - 2nd Saturday of each month, 10am-3pm, Lyndoch Institute. Books, olive oil, papercraft supplies, greeting cards, jewellery, candles, wooden boxes, fruit & veg, plants, microwave cosies, home sewn items, artwork, homemade biscuits, honey, Farmhouse Bakery, sausage sizzle and live entertainment from 11am. New stallholders wanted. Public Liability insurance required. Find us on Facebook. Enquiries 0412 219 742

**Advertise here**  
\$5 for 30 words  
\$8.50 with logo/photo.



**Mt Pleasant Farmers Market**, Undercover from 8 - 12 every Saturday morning at Mt Pleasant Showgrounds. Affordable, ethical & sustainable locally grown fresh food! 0418 301 121, [www.mpfm.org.au](http://www.mpfm.org.au)

**Lobethal Uniting Church** are having their **Annual Garage Sale** on Saturday, October 19th, with Bric-A-Brac, Plants, Sausage Sizzle. Come and Browse at the Lobethal Uniting Church. in the Main Street opening at 9am.

**POP UP Vintage.** OPENING on Saturday 19<sup>th</sup> October, 9am to 2pm. 18 Tuck Street, **MOUNT TORRENS.** Ceramics - Retro - Glassware - Furnishings - Kitchenalia. New Stock In. Card facilities available

## COURSES, PROGRAMS & CLASSES

**Music Lessons - Kersbrook.** Piano/Keyboard/Music Theory. Enquiries: Dawn Cowling. Associate Member Music Teachers Assoc. All Ages Welcome. 0427 170 082

**Partnership to Independence.** As John Lennon's song says - *Imagine*. Imagine how you would love your life and don't give up until it's done. Contact [info@merydithwillougby.com](mailto:info@merydithwillougby.com) to schedule appointment to design and develop it.

## FOR HIRE or RENT



**Gumeracha Town Hall** is available for Hire for your Function! Please contact Mr RJ Brooksby OAM on 8389 1418 for details.

**Hall for Hire.** Consider the RSL Hall, Wattle Street, Lobethal. Competitive hall hire rates, new Diggers kitchen, new equipment and amenities, air conditioned. Bookings - Dave on 0428 541 107

**ROOM FOR RENT** In furnished home - Lobethal. \$140 p/w All utilities included. Would suit lovers of nature, vegie gardens-chooks-natural bushland and other objects of interest. Room In Shared Home With Like Minded Person. Enquiries to 0407 500 905.

## TRADES & SERVICES

**ALL AREAS ELECTRICAL S.A.** Call us for your FREE quote. Specialising in ceiling fans, Split systems air conditioning, general power & lighting. No job too small! Facebook or 0408621424



**Welcome to The Hiive @ Houghton.** Houghton's own Art and Music Gallery, 17 Blackhill Road Houghton. Open Sundays' from 2:00pm to 5:00pm. [Hiivesa.com.au](http://Hiivesa.com.au), @hiivesa, Hiiveart space@hiivesa

**Advertise here**  
\$5 for 30 words  
\$8.50 with logo/photo.

**EMAIL YOUR COPY TO:**  
[editor@alongthegrapevine.com](mailto:editor@alongthegrapevine.com)

## Advertise HERE

from as little as

**\$29.75**  
per issue.

Minimum booking of 6 issues (3 months)

**0419 034 126**



## bh partners Real Estate

Phone: 8389 7555 Email: [bh@bhprealestate.com.au](mailto:bh@bhprealestate.com.au)

*Our Goal is to help You Achieve Your Real Estate Dream!*

*Contact our Team for all Your Real Estate needs!*



## TRADES & SERVICES GUIDE

### SEPTIC TANKS PUMPED OUT

**0417 000 365**

*Servicing the Adelaide Hills  
& surrounding areas daily*

**BOSISTO LIQUID WASTE**

### Haynes Plumbing

Kersbrook

- General Maintenance
- Guttering Repairs
- Drains & Septic Systems
- Hot Water Repairs & Replacements
- New & Renovation Work

Phone Tony  
**0408 056 155**

### Woodside SELF STORAGE

Sizes from 9m<sup>2</sup>  
Reasonable Rates

Phone Melissa - BH Partners  
**0438 252 207**  
**8389 4133**

**New Rubble  
Driveways  
Constructed**

**Old Driveways  
Repaired**

**General  
Earthmoving**

**Call Phil on  
0408 083 488**

SHIRE  HOMES  
*Quality Strength*

**New Homes  
&  
Extensions**

*Shane Williams*

Mobile: 0418 858 048 Phone: 8388 4683

BLD 209052



**Like us on  
Facebook!**

[www.facebook.com/grapevine.adelaide.hills/](http://www.facebook.com/grapevine.adelaide.hills/)

Web: [www.alongthegrapevine.com](http://www.alongthegrapevine.com)  
Email: [editor@alongthegrapevine.com](mailto:editor@alongthegrapevine.com)

### Jim Rigby Concreting & Paving

- Driveways
- Shed Floors
- House Foundations
- Retaining Walls

*Adelaide Hills,  
Barossa, Fleurieu  
& Murraylands*

M: **0408 081 588**

**FREE QUOTES**

## Along the Grapevine is available from...



**BALHANNAH**  
Foodland

**BIRDWOOD**  
Lovell's Bakery  
Foodland  
Newsagency  
Blumberg Hotel  
Café Blumberg  
Super Deli

**CHARLESTON**  
Hotel

**CUDLEE CREEK**  
Post Office  
Café

**GUMERACHA**  
General Store  
Post Office  
Hotel  
Torrens Valley Community Centre  
Parham's Feeding Services

**HAHDORF**  
Newsagency  
Adelaide Hills Information Centre

**HOUGHTON**  
Post Office

**INGLEWOOD**  
Inn/Hotel  
Lovell's Bakery

**KERSBROOK**  
Garage / General Store

**LENSWOOD**  
General Store

**LITTLEHAMPTON**  
Shell  
Foodland

**LOBETHAL**  
Newsagency  
Onkaparinga Meats  
Foodland  
Amberlight Deli

**MT PLEASANT**  
Bakery & General Store  
Post Office  
Lovell's Bakery

**MT TORRENS**  
General Store / Post Office

**NAIRNE**  
Corner Takeaway

**NORTON SUMMIT**  
Community Centre

**OAKBANK**  
Pizza Bar  
Chaff and Fodder

**SPRINGTON**  
General Store

**URAILDA**  
Friendly Grocer

**WILLIAMSTOWN**  
Bakery

**WOODSIDE**  
Motors / Caltex  
Foodland  
Dunn's of Woodside (Butcher)  
Lovell's Bakery  
Positive Aging Centre

## TRADES & SERVICES GUIDE

### GARDEN MAINTENANCE



- Mowing, including ride on
- Weeding
- General clean up
- Planting
- General garden maintenance
- Hedging



www.facebook.com/p4paustralia

**Free Quotes - 0401 672 796**

www.passion4properties.com.au



- ✓ SITE CUTS
- ✓ LANDSCAPE PREP
- ✓ DRIVEWAYS
- ✓ SITE CLEANUP
- ✓ HOLE BORING
- ✓ QUARRY PRODUCTS
- ✓ TRENCHING
- ✓ LASER LEVELLING

**Call Michael - 0412 120 557**

Free quotes. Full insurance coverage. www.mjdbobcat.com.au

### JURY'S LIQUID WASTE

- SEPTIC TANKS | HOLDING TANKS
- RAINWATER TANKS
- WINERY WASTE | GREASE TRAPS
- PORTABLE TOILETS
- BIO CYCLE & BI TREAT
- CLEANING SPECIALISTS

**Ph: 8563 9190  
Mob: 0407 603 558**

Do you struggle to hear the full conversation? Get sound advice on the right hearing solution



smart hearing

We are here, so you can hear

Tim Williams



plumbing & gas

Licence: PGE292850

**Residential and Commercial Master Plumber and Gas fitter**

- Fully licensed and insured small family business
- Carrying out new installs and maintenance on existing services
- 4X4 Access for hard to reach farming/rural properties
- Licensed for install and testing of "Backflow Prevention" devices

*We offer metro prices to our country customers and pride ourselves on "Quality not Quantity"*

PH: 0429 055 904 Email: tswilliamsplumbing@gmail.com



BUILDING DESIGN & ARCHITECTURAL DRAFTING

COUNCIL PLANS & APPLICATIONS

DESIGNING PLACES

0424 364436

Carpentry / Building rep

BLD283020

www.designingplaces.com.au

Fixed price Quotes

# Adelaide Hills

## BUILDING

BLD186992

- Home Renovations
- Extensions
- Carports & Pergolas

**0437 447 698**

All work fully Guaranteed

Over 25 years experience

No job too big or too small

adelaidehillsbuilding@gmail.com

www.adelaidehillsbuilding.com.au

# HILLS BRAKES CLUTCH AND SUSPENSION

JOHN RICE

Est. 1995  
30+ years experience



Phone 8568 5314

2912 Onkaparinga Valley Rd, Birdwood

### BRAKE and SUSPENSION SPECIALIST

- \* Spare Parts Supply or Supplied & Fitted
- \* Wheel Alignment
- \* Alignment Correction Kits
- \* Suspension & Steering Repairs
- \* 4WD Suspension and Lift Kits
- \* Horse Float & Trailer Brakes
- \* Under Car Repairs
- \* Clutch Repairs
- \* Disc & Drum Machining
- \* CV Joint & Shaft Replacement
- \* Shock Absorbers, Struts & Coil Overs
- \* Re-sleeved Cylinders, bonded Shoes



~ Automotive Batteries NOW AVAILABLE ~

STANDARD PASSENGER VEHICLES, 4WD, RESTORED VEHICLES, HOT RODS, STREET MACHINES, RACE-RALLY AND SPORTS CARS.