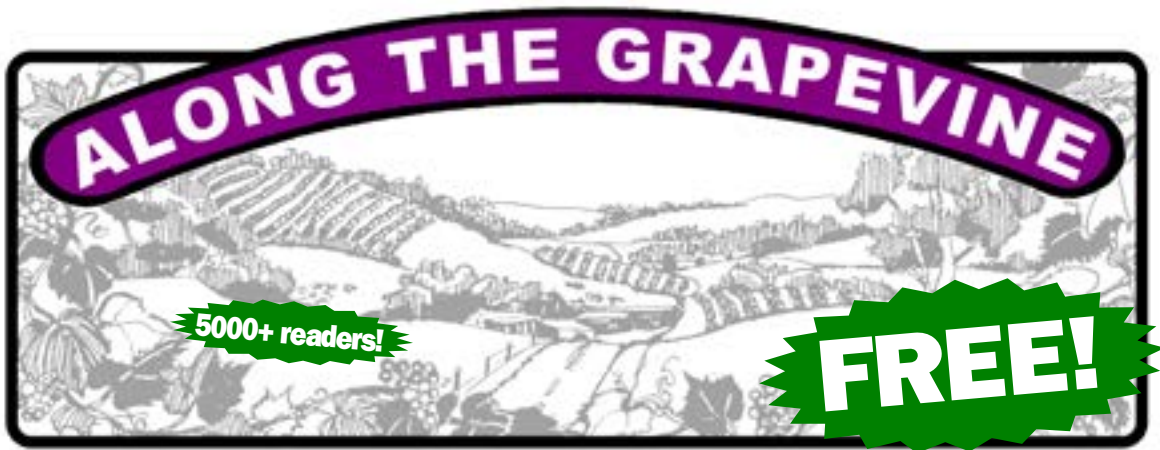


Custom Merchandise and Gifts



18 Albert Street
Gumeracha
info@123t.com.au



Volume 26, Number 8

May 8th - May 21st, 2021

PO Box 47, Lobethal

Tel. 0419 034 126

Email. editor@alongthegrapevine.com

Many hands make light work

Currently on show at the Mill Road Pocket Forest are pops of purple from Mexican Sage, red Kangaroo Paw and the autumnal leaves of deciduous trees. As the garden grows and the seasons change so will the display. The Mill Road Pocket Forest is a Lobethal Community Association bushfire recovery project. Stage 1 was planted last year and the planting of Stage 2 is about to commence over autumn and into winter this year.

Project team members Deb, Candice and Kim are looking for people to help. "Last year we had 30 people spread over 5 weekends who gave us a hand."



*Pictured left to right are
Deb Pejta,
Kim Jordan
and
Candice Oster*

**Continued
on page 6**



RAA APPROVED
CRASH REPAIRER

Mt. Pleasant Crash Repairs

Recommended repairer for **ALL** major Insurance Companies

- BAKING OVEN FOR FACTORY FINISH
- COURTESY CAR BY ARRANGEMENT
- 24 HOUR WINDSCREEN REPLACEMENT
- ALL TYPES OF VEHICLES REPAIRED



RAA APPROVED
MECHANICAL



Mt. Pleasant Mechanical Centre

Now specialising in heavy vehicles, including caravans, buses and trucks

FREE CALL 1800 801 180

9 Railway Terrace, Mount Pleasant

24 HOUR - 7 DAYS TOWING

“YOU MATTER TO GOD”

Kersbrook Church of Christ

Contact Pastor David on 0458 589 996 or someone at your local church to find out more of God's love for you.

According to NASA: 'ordinary, observable matter (like stars and planets) makes up a measly 5% of the universe. The other 95% of the universe is made up of invisible dark energy (68%) and dark matter (27%). That means there's 95% of the universe that we don't know about yet...' The planetary system we call home is located in an outer spiral arm of the Milky Way galaxy. Our solar system consists of our star, the sun, and everything bound to it by gravity.'

A great conjunction is a conjunction of the planets Jupiter and Saturn, when the two planets appear closest together in the sky. Johannes Kepler investigated whether the Star of Bethlehem, which guided the 3 wise men to Christ's birth, was a great conjunction, calculating that one did occur in 7 B.C.

A total lunar eclipse or 'Blood Moon' is forecast for 26 May, and this occurs when the earth blocks direct sunlight to the moon's surface. Some

sunlight still reaches the lunar surface indirectly, bathing the moon in a reddish glow.

But God's Word tells us much more about the universe and our purpose in life than this!

Isaiah 40:26 declares: "Lift up your eyes on high and see: who created these? He who brings out their host by number, calling them all by name, by the greatness of his might, and because he is strong in power not one is missing." Psalm 8:3-4 asks the question: "When I look at your heavens, the work of your fingers, the moon and the stars, which you have set in place, what is man that you are mindful of him, and the son of man that you care for him?" Colossians 1:15-17 identifies Jesus: "He is the image of the invisible God, the firstborn of all creation. For by him all things were created, in heaven and on earth, visible and invisible, whether thrones or dominions or rulers

or authorities—all things were created through him and for him. And he is before all things, and in him all things hold together." Revelation 4:11 proclaims: "Worthy are you, our Lord and God, to receive glory and honour and power, for you created all things, and by your will they existed and were created." And Psalm 24:1 (KJV) teaches us that: "The earth is the LORD'S, and the fulness thereof; the world, and they that dwell therein."

We believe God created the heavens and the earth and cares for His creation. The Bible describes how Jesus came to earth as foretold in the Old Testament. He died on the cross of Calvary but rose again to life. The Bible teaches us: "God so loved the world that He gave His one and only Son, that whoever believes in Him shall not perish but have eternal life." John 3:16. It is worth investigating for yourself because, we believe, you matter to God.

Klose's



OPEN EVERYDAY

7.30AM - 9PM

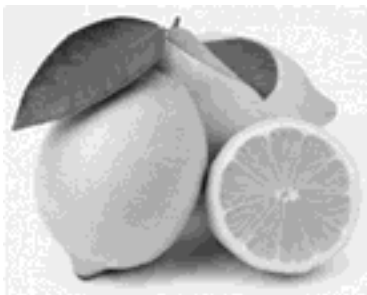
BALHANNAH | BIRDWOOD | LITTLEHAMPTON
LOBETHAL | NAIRNE | WOODSIDE

CLOSED CHRISTMAS DAY

Foodies Column

It's citrus season and the lemons are in abundance! If your tree is not burgeoning with this refreshing fruit, I recommend you look at feeding your tree with liquid potash once a week or two during the flowering and fruiting season. We had two trees that barely fruited, but once the potash started to work, we now have so many lemons! If you don't have your own tree, I'm sure someone in the community would love to bless you with some from theirs! Also, there's often people putting listings up on Facebook, marketplace or Gumtree!

I love to make curd and Madeira cake with my lemons, but one of the family's favourites, at the moment, is a lemon self saucing pudding. It has a soft pudding and a



sauce bursting with tang; it's the perfect treat served with a spoon of ice cream and thickened cream on these chilly nights!

Pre heat your oven to 180 degrees.

For the pudding, place the following ingredients into a mixing bowl.

- 1 cup self raising flour
- 3/4 cup white sugar
- 60g butter, melted
- 1/2 cup milk
- Zest of one lemon

Mix all these together (too much mixing will make a stodgy recipe, so mix just enough to incorporate all ingredients together) and place evenly over the base of a deep casserole dish - no need to grease the dish!

Sauce:

Juice of 2 large lemons (the more juice the more punch!)

- Zest of 1 lemon
- 3/4 cup white sugar
- 1 1/2 cups boiling water

Mix together and pour over the batter. Bake for approx 45 minutes.

*I use white sugar for a clearer sauce and lighter pudding

*you can alter the tang of

the lemon by adding more juice and zest, or lowering the sugar amount in the sauce

*I use a deep dish to stop the sauce spilling over the edges in my oven. If you don't have a deep dish, place a tray (larger than the dish) with alfoil underneath to catch any spills from becoming a sticky mess in your oven.

DEADLINE

For next issue, ads & editorial

Tuesday, May 18th, 2021

Publication out **Saturday, May 22nd, 2021**



Adelaide Hills Business and Tourism Centre Inc.

Units 22A/22B,
1 Adelaide - Lobethal Road,
Lobethal

Ph: 8389 6988 Fax: 8389 6944
Mobile: 0412 833 699

S I G N S

CNC ROUTING & ENGRAVING

- Directories
- Magnetic
- Displays
- Block Letters
- Vehicles
- Computer Cut Vinyl
- Banners
- Windows
- Plaques
- 'A' Frames
- Logos
- Plastic Letters
- Brass
- Aluminium
- Timber
- Styrene
- Soft Metals



Thinking of selling in 2021?

There is clearly a heightened demand for properties in our area. People are looking for space and a sense of community.

In fact, 40% of properties I have sold in the last 12 months have been sold to people registered on my data base, meaning ZERO marketing costs for the seller!"

Ask for your free property appraisal. I will provide you with an appraisal based on a genuine understanding of local market pricing and conditions.

INWOOD REAL ESTATE— RESPECT, RELIABILITY, RESULTS

134 Melrose Street
MT PLEASANT SA 5235
www.inwoodrealestate.com.au

Richard Inwood
0428 606 420



MARKET ACTIVITY SIGNS

What to watch out for

You've probably noticed that over the last 12 months Australia has experienced a buying frenzy; sale prices have gone beyond expectations, multiple buyers are competing for properties, opens have queues of people and many buyers have missed out time and time again.

So what's next? Where is the market going? How will it affect you?

With low stock levels and high buyer activity, prices will remain strong for the short term. However, history tells us that for every upturn in the market, a downturn will follow. So we look for the signs that suggest change is coming.

Learn about these 5 signs of change on our website:
cepropertygroup.com.au/5-signs-of-change

Alternatively, give our team a call on 0488 972 888 to discuss your long term strategy and how changes in the market can affect you.

 0488 972 888

 cepropertygroup.com.au

 @CEPropertyGroup

Birdwood • Mannum • One Tree Hill
mail@cepropertygroup.com.au

RLA100925. This a general promotion.



CE PROPERTY
GROUP

Real Estate with a difference!

Hidden Treasures of Lobethal

Community members are invited to be part of an interactive exhibition at Fabrik, celebrating the special places, memories and people of Lobethal, and proposing a vision for its future, at a special pre-opening event on May 18th. The exhibition *Hidden Treasures* is an artist-led project using creativity as a lens to map positive aspects of Lobethal, including people, places, memories and hopes for the future.

Fabrik Project Officer René Strohmayer has been working on the project, with local primary schools and seniors groups in the community, since the beginning of the year. "It

has been just wonderful to share the many things that the community value about living in Lobethal," said René. "After the challenges of the fires and Covid, we are seeing how important it is to turn our focus to the positive aspects of our lives. We have been using a creative process called art mapping to visually represent the information shared by the children and seniors, and once the exhibition is installed, we really hope that the rest of the community will take their turn and share with us what they value about Lobethal."

Artist Claire Wildish has worked creatively with all of the students

at both the Lobethal Primary and the Lobethal Lutheran schools, developing treasure maps of the town to show all of their favourite places. "The students have engaged so enthusiastically," said Claire.

"Bushland Park has repeatedly been identified by the students as a treasured place, along with the Lobethal Bakery, the CFS Opp Shop and Emma and Ivy's café. The students are also painting self-portraits for the exhibition, because of course, they are treasures too!"



Children of Lobethal Primary School working on their maps in a session with artist Claire Wildish.

CONTINUED ON PAGE 7

HIDDEN TREASURES

Fabrik invites you, members of our community, to share what you think are the treasures of Lobethal, in this interactive community exhibition.

Ponder the questions below and join us for a free pre-opening community event at Fabrik with local company, music, food and wine.

Considering the challenges faced by our community and the strength and resilience shown, **who, what and where are the treasures of Lobethal?**

As you reimagine the future, **what is your vision for Lobethal?**

Pre-opening event
6 - 8pm Tuesday 18 May

For more information or to book
call 0416 416 293 or visit
www.fabrik.org

Fabrik Arts + Heritage
1 Lobethal Road, Lobethal



Hidden Treasures Exhibition
Open 10am - 4pm, May 19-29



Wellbeing SA

This project is funded under Wellbeing SA's Strengthening Community Wellbeing After Bushfires Grant Program



FABRIK



Mt. Pleasant Mechanical Centre

Now specialising in heavy vehicles, including caravans, buses and trucks

FREE CALL

1800 801 180

9 Railway Terrace, Mt Pleasant



APPROVED MECHANICAL

10% OFF

ALL TYRE SALES!

Offer valid until May 31st, 2021

Many hands make light work

... Continued from page 1

We are hoping for a similar turn out this year and welcome both previous participants and new people keen to be involved. Tasks can vary according to people's interests and abilities but could include planting out tube stock; weeding or wheelbarrowing and spreading mulch', said Kim.

The project has been a collaboration with Willunga landscape designer, Evette Sunset. Evette is passionate about the use of carefully considered design to create fire safer gardens. The

design principles and plants Evette has recommended are intended to slow down the progress of fire. The Pocket Forest will be a resource to inform people about fire safer garden practices as well as an exciting entrance statement for Lobethal.

Adelaide Hills Council have also been supporting the project with contributions including repairing the footpath next to the garden, adding rocks to retain the soil and converting the old mill road to create a walking loop around

the garden.

You meet all sorts of interesting people when you volunteer. The tintype style photograph of the Mill Road Pocket Forest Project team was taken by Peter Stanley. A Lobethal local, Peter is the operator of the Tintype Traveller Mobile Darkroom.

If you would like to lend a hand to plant the forest, meet some interesting people and develop this fabulous community resource, email the project team at lobethal.commuity.association@gmail.com.

LOVE!  **LOVE?**
LOVE ...

A show with Music and Comedy
about looking for love, losing love & finding love
for all ages, all nationalities & all time!

7.30pm SAT 22nd, FRI 28th, SAT 29th
2pm SUN 23rd, SUN 30th MAY 2021

Mt Pleasant SM Hall, 61 Melrose St, Mt Pleasant, SA
Adults \$25, Concession \$20, Students \$10
Book at www.trybooking.com or 0435 403 364

Cabaret Seating **BYO** drinks & nibbles

TERRY WARKE UPHOLSTERY

97 Main Street, Woodside
Phone: 8389 7644

For All Your Upholstery Requirements

Open Tuesday to Friday & Saturday mornings
CLOSED SUNDAYS & MONDAYS

Grassroots Grants now open from the Hills and Fleurieu Landscape Board

Are you an individual, volunteer, school, community member or not-for-profit group working locally for environmental benefit?

Funding is now available for up to \$1,000 and from \$1,001-\$20,000 to help restore the local natural landscape.

Your project must be within the region covered by the Hills and Fleurieu Landscape Board, which runs from Kersbrook to Cape Jervis, and from the Lower Gulf St Vincent across to the Murray Mouth and Langhorne Creek.

Applications close 24 May.

For information and to apply, visit www.landscape.sa.gov.au/hf



Hidden Treasures of Lobethal

CONTINUED FROM PAGE 5

Members of the Lobethal Senior Citizens group as well as residents of the Valley of Praise Retirement Village have also been involved, sharing treasured memories from their lifetimes in Lobethal. Claire is creating a large map for the exhibition that will include these memories and shared photographs. "The Mill and the former hospital featured strongly in these memories," said Claire, "as did footy, the soapbox derby and social events at Centennial Hall. We especially loved hearing the stories of courtship at the dances."

All of the shared creative mapping elements will be part of the Hidden Treasures exhibition at Fabrik, which is a registered DreamBIG Festival event, and organisers are holding a special pre-opening event for community members to make their additions to the exhibition. "We hope the contributions from other members

of the community will shine some light on other aspects of the town," said René, "including some mysteries we would love to find the answer to. Like, how did Magpie Castle Road get its name? We've heard that there was once a castle-like summer house on the street. And does anyone have information about the cricket bat factory, and the growing rumour that the treasured lunch box addition of Fritz originated in Lobethal?"

As well as responding to the question "who, what and where are the treasures of Lobethal?", community members will also be invited to share their vision for the future of Lobethal, by responding to the question: "As you reimagine the future, what is your vision for Lobethal?"

The Lobethal Community Association is keen to ensure community contributions from the exhibition are considered to inform future Lobethal projects.



Twin sisters, Mary Sickerdick and Rose Green (Mary is on the left in blue), sharing their treasured memory of Lobethal, the image of their double wedding held at the Prince of Peace Church of England in Lobethal, 1952.

The pre-opening community event will include live music and local food.

To book your place at this event visit www.fabrik.org and look for Hidden Treasures or phone René on 0429 416 293.

Pre opening community event: 6-8pm, Tuesday 18 May. Exhibition dates: 19-29 May, open daily 10am-3pm at The Blanket Room, Fabrik Arts + Heritage, 1 Lobethal Road, Lobethal

Klose's Cellarbrations

STOCKING A HUGE RANGE OF ADELAIDE HILLS WINES,
LOCAL BEERS, CIDERS & DISTILLED SPIRITS AS WELL
AS YOUR FAVOURITES.

OPEN EVERYDAY 10:00am – 9:00pm

Locals supporting Locals

Woodside | 25 Onkaparinga Valley Road, Woodside • Telephone 08 8389 7989
Nairne | 121 Princes Highway, Nairne • Telephone 08 8366 2232

Lions Update



Congratulations and welcome to Polly Green and Jay Chandaparam, both of Gumeracha, on becoming the newest members of the Lions Club of Torrens Valley. Polly and Jay were inducted into our Club at our last Dinner meeting (pictured above).

The Club supplied and cooked a sausage sizzle for those attending the Skate and Scoot at Gumeracha last Saturday.

Club members attended the ANZAC Day Dawn Service and then cooked a free breakfast for approx 200 attendees.

Yet another couple of BBQ's outside Klose's Foodland Birdwood where wood raffle tickets were also sold. If you would like to buy a raffle ticket (or two) please contact Peter on 0429 664 297 or Bob Willoughby on 0427

338 685. The raffle will be drawn at the 5th Sunday Market, winner notified by phone and results published in Along the Grapevine.

We will be assisting at the Medieval Fair, by manning the gates, this weekend!

If you would like further information on Lions and/or what we do in our community please contact Dave on 0417 821 107.

Barb's Bowen & Massage

Integrated Natural Therapies

Barb Collins Dip BT

Terlinga Road, Tungkillo

*Mondays, Tuesdays,
Thursdays and Fridays, 9am-5pm*

- Bowen / Massage
- **Mayan® Abdominal Massage**
- **Lifeline Kinesiology**
- **Oncology Massage**
- **DoTerra® oil massage**
- **Needle Less Acupuncture**
- **Detox Foot Spa**

- Pensioner Discounts
- Health Fund Rebates Available

0437 387 070

Or: 8568 2547 A/H,
www.barbsbowen.com.au



Barossa Landscape Supplies

57 Victoria Tce, Williamstown SA 5351

ABN: 15 717 640 177

Mobile: 0448 881 665

www.barossalandscape.com.au

admin@barossalandscape.com.au

Opening Hours

Monday - Friday 7am—5pm

Saturday 8am—3pm

Sunday Closed

Fuel

ULP
Diesel
Swap 'n' Go Gas

Retaining Wall supplies

Sleepers

Pavers
Pots
Barrels
Fertilizer

Quarry material

Stone
Rubble
Sand & Loam
Mulch

Compost

Bark chips
Firewood
Giftware
Clothing



Plus much more, come in and see
Richard, Brent & Giles,
we are happy to help.
Our range is growing every day.

\$5 Classifieds

COMING EVENTS



Open Every Saturday 8am – 12 noon. Mt Pleasant Showground. Fresh Local Produce. Friendly Stall Holders. Gourmet breakfasts & espresso coffee. Check out our Instagram & FB pages! @mountpleasantfarmersmarket

ZEN HOUSE JUMBLE SALE. A garage sale with a difference. The first Sunday of EVERY month from 10am to 4pm. All stalls under cover. 4 Langbein Ave, Woodside. SMS 0422 468 487 for more information.

COURSES, PROGRAMS & CLASSES

MUSIC LESSONS, KERSBROOK. Piano/Keyboard/Music Theory. Dawn Cowling. Associate member of the Music Teachers Association of SA. 0427 170 082

Come and Try Drumming - Hand drums, djembes, bells & whistles! Monthly sessions starting in June in Gumeracha area, beginners and experienced, adults and children 7+. All instruments supplied or bring your own. \$10 per person. Enquiries: linda@artbeat@gmail.com or mobile: 0451 548 010



EXPERIENCED MUSIC TEACHER - PIANO AND KEYBOARD LESSONS. Including Theory Of Music. Children from 7 Years. All Other Ages Welcome. Please Phone Janet on 0477 887 588

FOR HIRE or RENT

Hall for Hire. Consider the RSL Hall, Wattle Street, Lobethal. Competitive hall hire rates, new Diggers kitchen, new equipment and amenities, air conditioned. Bookings – Jo Kirlew: 0418 194 408



Gumeracha Town Hall is available for Hire for your Function! Please contact Mr RJ Brooksby OAM on 8389 1418 for details.

GIVEAWAY

FREE Blue-gum Firewood - Bring your chainsaw and help clear side branches left after harvesting forest. Ring 0429 679 199

Advertise here
\$5 for 30 words
\$8.50 with logo/photo.

printing

- business cards
- fliers & brochures
- fridge magnets
- invoice & statement books

advertising

- classifieds adverts from \$5 for 30 words or \$8.50 for 30 words and 1 logo/photo
- display advertising from \$30 to \$230
- discount rates for online editions!

Along the Grapevine

mob. 0419 034 126 email. editor@alongthegrapevine.com
PO Box 47, Lobethal SA 5241

\$5 Classifieds

TRADES & SERVICES



★★★★★★★★★★★★
Supreme Painting
 35 years experience. Prompt and Reliable. Interior and Exterior. Wallpaper removed. Colour Consultant. Quality service. Seniors Discount.  Free quotes. Lic 19836. Mobile 0419 848 339
 ★★★★★★★★★★★★★★



FIREWOOD MADE EASY.
 10 years experience splitting/cutting wood. Servicing Adelaide Hills area, using quality machinery, no job too big or small. Call Geoff on 0409 001 421

ALL AREAS ELECTRICAL S.A. Call us for your FREE quote. Specialising in ceiling fans, Split systems air-conditioning, general power & lighting. No job too small! Facebook or 0408621424



HOWES PAINTING— 40 years experience! Residential, Commercial, Maintenance, FREE QUOTES. Phone Terry on 0413 277 172

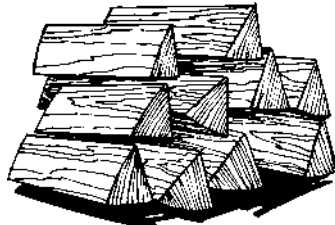
Hills Fencing - We supply quality affordable fencing throughout the hills and surrounding areas. Custom designed timber gates and entrances. Horse arena mirrors, horse yards, paddocks and all general timber and wire fencing. Retaining walls, picket and paling fences. Tight access mini digger for post hole drilling/trenching, bucket work/site clean up. **Phone Wayne Copping on 0428 821 005**



Support for individuals and families experiencing financial difficulties residing in the Adelaide Hills. Access to pantry items, bread and fresh produce. Provision of food & fuel vouchers. Part bill payments and school costs. No Interest Loans available. Call 8339 4400, 1 Euston Road, Aldgate



GREENIE'S Small Engine Repairs. Service & Repairs to: Lawnmowers, Ride-ons, Brush Cutters, Chain Saws, Water Pumps etc. Phone Graham Green, 0428 891 542. 3 Smithers Court, Kersbrook.



Sick of splitting Firewood? I will come to your property to cut and/or split your felled/fallen or salvaged wood. Call Angus on 0412 395 017. Fully Insured.

Advertise here
\$5 for 30 words
 \$8.50 with logo/photo.



MURPHY FRAMING, Birdwood. Artwork, 3D objects, Needlework, Mats. 600+ frame choices. Conservation options. Easier selection - Visualisation program gives completed frame preview. **WATERCOLOUR CLASSES,** Beginners Welcome. Enquiries: 0402 594 354

Ali Roberts - 0467 165 042. Contact him to promptly unblock downpipes, clean gutters, gutter guard installation (re fire safety) clean solar panels (increase efficiency) + maintain roof (tiles) with flexipoint. (weeding, mowing also) (www.roofdog.com.au)



ALL AREAS ELECTRICAL S.A. Call us for your FREE quote. Specialising in ceiling fans, Split systems air-conditioning, general power & lighting. No job too small! Facebook or 0408621424



Free quotes, reasonable rates with 10% off for pensioners and students. Servicing all areas. Call Michael on 0466 039 196 or howz@outlook.com.au

TRADES & SERVICES GUIDE

SHIRE HOMES
Quality Strength



New Homes & Extensions

Shane Williams
Mobile: 0418 858 048 Phone: 8388 4683
BLD 209052

Haynes Plumbing
Kersbrook

- General Maintenance
- Guttering Repairs
- Drains & Septic Systems
- Hot Water Repairs & Replacements
- New & Renovation Work

Phone Tony
0408 056 155

Woodside SELF STORAGE

Sizes from 9m²
Reasonable Rates

Phone Melissa - BH Partners
0438 252 207
8389 4133

New Rubble Driveways Constructed

Old Driveways Repaired

General Earthmoving

Call Phil on 0408 083 488

bh partners your dreams - our goals www.bhprealestate.com.au

bh partners Real Estate

Phone: 8389 7555 Email: bh@bhprealestate.com.au

Our Goal is to help You Achieve Your Real Estate Dream!

Contact our Team for all Your Real Estate needs!



Along the Grapevine is available from...



BALHANNAH
Foodland

BIRDWOOD
Lovell's Bakery
Klose's Supermarket
Newsagency
Blumberg Hotel
Café Blumberg
Super Deli

CHARLESTON
Hotel

CUDLEE CREEK
Post Office
Café

GUMERACHA
Soldier's Memorial Hospital
General Store
Post Office
Hotel
Torrens Valley Community Centre

HAHANDORF
Adelaide Hills Information Centre

HOUGHTON
Post Office

INGLEWOOD
Inn/Hotel
Lovell's Bakery

KERSBROOK
Garage / General Store

LENSWOOD
General Store

LITTLEHAMPTON
Shell
Klose's Supermarket

LOBETHAL
Fodder Store
Newsagency
Onkaparinga Meats
Klose's Supermarket
Amberlight Deli

MT PLEASANT
Bakery & General Store
Post Office
Lovell's Bakery

MT TORRENS
General Store / Post Office

NAIRNE
Corner Takeaway
Klose's Supermarket

NORTON SUMMIT
Community Centre

OAKBANK
Pizza Bar
Chaff and Fodder

SPRINGTON
General Store

URAILDIA
Friendly Grocer

WILLIAMSTOWN
Bakery

WOODSIDE
Motors / Caltex
Newsagency
Klose's Supermarket
Dunn's of Woodside (Butcher)
Lovell's Bakery
Positive Aging Centre

TRADES & SERVICES GUIDE



BUILDING DESIGN & ARCHITECTURAL DRAFTING

COUNCIL PLANS & APPLICATIONS
DESIGNING PLACES
0424 364436
Carpentry / Building reg
BLD283020
www.designingplaces.com.au

Jim Rigby Concreting & Paving

- Driveways
 - Shed Floors
 - House Foundations
 - Retaining Walls
- Adelaide Hills,
Barossa, Fleurieu
& Murraylands
M: **0408 081 588**
FREE QUOTES



- ✓ SITE CUTS
- ✓ LANDSCAPE PREP
- ✓ DRIVEWAYS
- ✓ SITE CLEANUP
- ✓ HOLE BORING
- ✓ QUARRY PRODUCTS
- ✓ TRENCHING
- ✓ LASER LEVELLING

Call Michael ~ 0412 120 557
Free quotes. Full insurance coverage. www.mjdbobcat.com.au

JURY'S LIQUID WASTE

SEPTIC TANKS | HOLDING TANKS
RAINWATER TANKS
WINERY WASTE | GREASE TRAPS
PORTABLE TOILETS
BIO CYCLE & BI TREAT
CLEANING SPECIALISTS

Ph: 8563 9190
Mob: 0407 603 558



Like us on Facebook!

www.facebook.com/grapevine.adelaide.hills/

Subscribe on the website
web: www.alongthegrapevine.com

Fixed
price
Quotes

Adelaide Hills BUILDING

Over
25 years
experience

All
work
fully
Guaranteed

BLD301891

- Home Renovations
- Extensions
- Carports & Pergolas

No job
too big
or
too small

adelaidehillsbuilding@gmail.com

0437 447 698

www.adelaidehillsbuilding.com.au

HILLS BRAKES CLUTCH AND SUSPENSION

JOHN RICE

Est. 1995
30+ years experience

Phone 8568 5314
2912 Onkaparinga Valley Rd, Birdwood

BRAKE and SUSPENSION SPECIALIST

- * Spare Parts Supply or Supplied & Fitted
- * Wheel Alignment
- * Alignment Correction Kits
- * Suspension & Steering Repairs
- * 4WD Suspension and Lift Kits
- * Horse Float & Trailer Brakes
- * Under Car Repairs
- * Clutch Repairs
- * Disc & Drum Machining
- * CV Joint & Shaft Replacement
- * Shock Absorbers, Struts & Coil Overs
- * Re-sleeved Cylinders, bonded Shoes



**IRONMAN
DEALER**



~ Automotive Batteries NOW AVAILABLE ~

STANDARD PASSENGER VEHICLES, 4WD, RESTORED VEHICLES, HOT RODS, STREET MACHINES, RACE-RALLY AND SPORTS CARS.