

**Advertise  
HERE**

IN COLOUR  
from as little as

**\$41**

per issue!

**0419 034 126**



Volume 25, Number 8

August 8th to August 21st, 2020

PO Box 47, Lobethal

Tel. **0419 034 126**

Email. [editor@alongthegrapevine.com](mailto:editor@alongthegrapevine.com)

# SALA at Fabrik Lobethal

**Kendrea Rhodes** - 'Embedded Landscape' is a South Australian Living Artists (SALA) exhibition, featuring artist Jane Skeer. This exhibition responds to an emotional twelve months for regional Australians and emerges from Jane's own reactions to her experience of a changed landscape.

Politicians like to remind us that we are all in this together—in this time—but 'place' requires nuanced thinking for that generalisation. Contrary to current news headlines focussed on coronavirus, activity in the Adelaide Hills remains around bushfire recovery and day to day liv-



ing. There are still fences to mend, houses to build and people to

support. And as an unwelcome anniversary looms in December, we might still be saying the same thing.

**CONTINUED ON PAGE 8**

*Artists in residence, Anne Griffiths and Jan Brown at the Embedded Landscape SALA exhibition, Building 21, Fabrik (old Lobethal Woollen Mill). The exhibition is open Thursdays to Sundays, 11am to 4pm throughout August.*



**RAA**

APPROVED  
CRASH REPAIRER

## Mt. Pleasant Crash Repairs

Recommended repairer for **ALL** major Insurance Companies

- BAKING OVEN FOR FACTORY FINISH
- COURTESY CAR BY ARRANGEMENT
- 24 HOUR WINDSCREEN REPLACEMENT
- ALL TYPES OF VEHICLES REPAIRED



**RAA**

APPROVED  
MECHANICAL

## Mt. Pleasant Mechanical Centre

Now specialising in heavy vehicles, including caravans, buses and trucks

**FREE CALL 1800 801 180**

9 Railway Terrace, Mount Pleasant

**24 HOUR - 7 DAYS TOWING**



# "YOU MATTER TO GOD"

## Kersbrook Church of Christ

Contact Pastor David on 0458 589 996 or someone at your local church to find out more of God's love for you.

*"Your love, O Lord, reaches to the heavens, your faithfulness to the skies. Your righteousness is like the mighty mountains, your justice like the great deep. O Lord, you preserve both man and beast. How priceless is your unfailing love! Both high and low among men find refuge in the shadow of your wings... For with you is the fountain of life;*

*in your light we see light." (Psalm 36:5-7&9NIV).*

The Old Testament prophet, Isaiah, prophesied in chapter 42: verses 6-7: *"I, the Lord, have called you in righteousness; I will take hold of your hand. I will keep you and will make you to be a covenant for the people and a light for the Gentiles, to open eyes that are blind, to free captives from*

*prison and to release from the dungeon those who sit in darkness."*

The Christian website 'got questions' provides the following insight: *"I am the Light of the world"* (John 8:12) is the second of seven "I AM" declarations of Jesus, recorded only in John's gospel, that point to His unique divine identity and purpose. In declaring Himself to be the Light of the world, Jesus was claiming that He is the exclusive source of spiritual light. No other source of spiritual truth is available to mankind. There are two types of light in the world. We can perceive one, or both, or neither! When

we are born into this world, we perceive physical light, and by it we learn of our Creator's handiwork in the things we see.

However, although that light is good, there is another Light, a Light so important that the Son of God had to come in order to both declare and impart it to men... We take a candle into a room to dispel the darkness. Likewise, the Light of Jesus Christ must be taken into the darkness of sin that engulfs the hearts and lives of those who are not following Him...

Physical light is necessary for physical life... In the same way, spiritual light is necessary for spiritual life... When God

said, "Let there be light," at the creation, and light appeared, it showed God's creative power and absolute control. The physical light that God made on the first day of creation is a wonderful picture of what He does in every heart that trusts in Christ, the True Light. There is no need to walk in the darkness of sin and death; in Christ, we "will never walk in darkness, but will have the light of life" (John 8:12).'

How is your eyesight? Test and see, ask God for light to see His truth and diligently search in the Old and New Testament of the Bible to discover that Jesus really does open eyes to the truth of who He is: the fountain of life and the light of the world.

We believe we all matter to God and that includes you. Have you seen that light and truth yet?

## DEADLINE

For next issue, ads & editorial  
**Tuesday, August 18th, 2020**

Paper out: **Saturday, August 22nd, 2020**

# Klose's

SUPERMARKETS

Truly Local



## OPEN EVERYDAY

### 7.30AM - 9PM

BALHANNAH | BIRDWOOD | LITTLEHAMPTON

LOBETHAL | WOODSIDE

Closed Christmas Day

# Friends of Bushland Park update

Lobethal Bushland Park has seen some amazing progress over recent weeks thanks to contractors and volunteers who have worked tirelessly removing *Fumitory* (*Fumaria* spp.). This prolific weed was removed from around the lower dam, saving the rare and endangered Pale Everlasting Daisies (*Coronidium gunnianum*). Millions of *Fumitory* seeds were also removed, which otherwise would have lain in wait until next year, ready to germinate. This is a great result for the recovery of the Park and all down to many hours of hard work by a generous workforce.

*Fumitory* is an annual herb from Morocco that germinates with rain in late summer. It grows and climbs through other plants, smothering them. *Fumitory* on this scale is a relatively new threat in Lobethal Bushland Park. For years it has grown beneath Native Cherry trees (*Exocarpus cu-*



*pressiformis*) but recently it begun to creep a little further.

Over time the *Fumitory* built up a large seed bank in the soil, waiting for an opportunity to proliferate—waiting for a bushfire. Since the Cudlee Creek fire, there were a few areas in the Park where it become rampant. *Fumitory* seeds persist in the soil for up to 20 years and can germinate under a wide range of temperatures. It is a self-

pollinating plant and it has a mutually beneficial relationship with ants who move the seed around, add to this a lack of natural pests and diseases in Australia and it becomes a fearsome adversary for native flora. *Fumitory* belongs to the Papaveraceae family, which is the same family as poppy flowers.

Friends of Lobethal Bushland Park meet regularly at the Park. To find out more con-

tact them on Facebook or via email: [bushlandpark@gmail.com](mailto:bushlandpark@gmail.com).

## TERRY WARKE UPHOLSTERY

97 Main Street, Woodside  
Phone: 8389 7644

For All Your Upholstery Requirements

Open Tuesday to Friday & Saturday mornings  
CLOSED SUNDAYS & MONDAYS



### Mt. Pleasant Mechanical Centre

Now specialising in heavy vehicles,  
including caravans, buses and trucks

**FREE CALL**

**1800 801 180**

9 Railway Terrace, Mt Pleasant

**RAA**

APPROVED  
MECHANICAL

# 10% OFF

**ALL TYRE SALES!**

Offer valid until August 31st 2020



YOUR  
JOURNEY  
STARTS HERE

## WE ARE HIRING!

### Property Sales Specialist

At CE Property Group we like to do things differently and how we recruit new members to our team is no exception. We prefer to hire people with life experience, a record of high achievement, integrity and commitment; meaning **you don't have to have real estate experience.**

If you are ready to walk a new career path, can build strong relationships, stay motivated and embrace flexible working hours then your journey may start here.

Visit **[www.cepropertygroup.com.au/careers](http://www.cepropertygroup.com.au/careers)** to learn more about the role, our agency and to register your interest.

 0488 972 888

 [cepropertygroup.com.au](http://cepropertygroup.com.au)

 @CEPropertyGroup

Birdwood • Mannum • One Tree Hill  
[mail@cepropertygroup.com.au](mailto:mail@cepropertygroup.com.au)

RLA100925. This a general promotion.

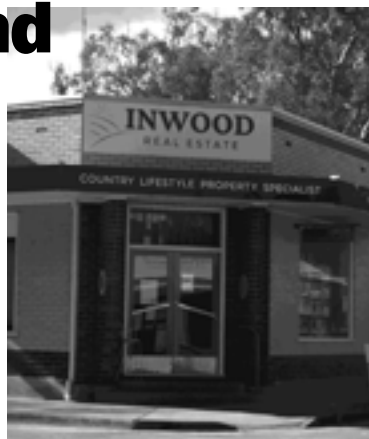


**CE PROPERTY**  
GROUP

*Real Estate with a difference!*



# Inwood Real Estate – Country Lifestyle and Broadacre Farming Specialist



Inwood Real Estate is an agency that is progressive and independent; non-corporate and non-franchise... Instead, an agency that has customer service at its heart - not corporate profits.

My personal reputation is on the line and is your guarantee of a service that genuinely goes the extra mile. You will find me available 7 days a week – 0428 606 420.

Country standards are

worth respecting, where relationships are valued because we all live, work and play in our wonderful community. My role is to assist each client, and their family, on the basis of being local and respected people, who I hope to meet again and again post the sale as I move around our community.

Ask for your free appraisal! It's wise for every seller to meet with 2-3 agents and to conduct your

"interview". Please feel free to include me on your agent list. Living locally, with my office in Mount Pleasant, provides me with genuine local property knowledge. I very much look forward to meeting with you.

If you want knowledge, dependability and results, you have found it with Inwood Real Estate!

## Testimonials

"We highly recommend Richard after using him to sell our property. He was very knowledgeable and professional from the outset. His compassion, honesty and communication made us feel at ease, which made the process as stress free as it could be. We really enjoyed working with Richard and in the future if the need arises we will definitely use his services again."

**Benjamin D - vendor**

"We found Richard great to work with, he sought to understand our needs and requirements while we searched for a rural property for our family. He was extremely knowledgeable of the market and helped us find the right property, and made the whole buying process easy. We would use Richard's services again if needed and would highly recommend his services to other people looking for property." **Barry C - purchaser**



## INWOOD REAL ESTATE

**COUNTRY LIFESTYLE & BROADACRE FARMING**

### PROPERTY SPECIALIST

BAROSSA VALLEY
MID-MURRAY

ADELAIDE HILLS
KANGAROO ISLAND

**Richard Inwood**

RLA 503166 Licensed Auctioneer

0428 606 420

richard@inwoodrealestate.com.au

134 Meinrose Street MT PLEASANT 5235

Office (08) 8568 2309



**INWOODREALESTATE.COM.AU**

## LOOKING TO SELL?

### LET'S ARRANGE A CURRENT MARKET APPRAISAL.

**BAROSSA VALLEY**

- Angaston
- Cockatoo Valley
- Eden Valley
- Lyndoch
- Mt Pleasant
- Nuriootpa
- Tanunda
- Williamstown

**MID-MURRAY**

- Blanchetown
- Cadell
- Mannum
- Morgan
- Swan Reach
- Truro
- Walker Flat
- Younghusband

**ADELAIDE HILLS**

- Birdwood
- Crafrers
- Cudlee Creek
- Kersbrook
- Lobethal
- Mt Torrens
- Stirling
- Woodside

**KANGAROO ISLAND**

- American River
- Brownlow
- Emu Bay
- Island Beach
- Kingscote
- Parndana
- Penneshaw
- Stokes Bay






# NEW ANT ALLERGY CLINIC OFFERS CARE CLOSER TO HOME

Adelaide Hills residents with Jack Jumper Ant allergies will be able to access potentially life-saving treatment outside of hospital and closer to home for the first time, with a designated clinic now open in Mount Barker at the Summit Health Centre.

Central Adelaide Local Health Network (CALHN) Immunologist, Dr Adriana Le, said the Adelaide Hills is a hot-spot for Jack Jumper Ants with the majority of patients with severe allergies living in the area.

"The Jack Jumper Ant, or Hopper Ant, is endemic to the Adelaide Hills and for those with a severe allergy, a sting can cause life-threatening anaphylaxis," Dr Le said.

"Until now, the Royal Ade-

laide Hospital (RAH) has been the only site to provide this treatment, which reduces the chance of a severe reaction to less than five per cent.

"The opening of the Hopper Ant Allergy Clinic at the Summit Health Centre in Mount Barker will mean more than 50 patients, who have had to travel to the city each month, will now be able to access the treatment closer to home.

"It will also help to free up treatment spaces at the RAH for other procedures that really need to be performed in a hospital.

"This is one of a number initiatives being explored by CALHN as we look to move services closer to where people live and provide more care in the community."

The more stings a person



Courtesy of James Dorey Photography

receives over a lifetime, the more likely they are to develop a Jack Jumper Ant allergy, which is the second most common venom allergy, after bee stings.

CALHN's highly effective desensitisation treatment was developed by RAH Clinical Immunologist Emeritus Professor, Robert Heddle.

Dr Adriana Le said the treatment involves giving patients a purified extract form of the venom, starting with a small amount and then building up tolerance.

"Venom immunotherapy is a long-term commitment, re-

quiring weekly injections for the first two months and then ongoing clinic visits every four to 12 weeks for top-up injections for five years or longer," Dr Le said.

"The treatment is highly effective and offers patient's peace of mind, because without it, they would need to carry an EpiPen at all times and avoid being stung."

The initial weekly injections will be completed at the RAH, but patients will now be able to undergo the maintenance course at the Hopper Ant Allergy Clinic in Mount Barker.

## AUDITION NOTICE for AN EVENING OF 2 ONE ACT PLAYS for 2020 directed by Bronwyn Chapple for THE STIRLING PLAYERS INC

### TWO AUSTRALIAN ONE ACT PLAYS

#### 1 The Margarine Conspiracy

by Lissa Benyon

This play is set in Sydney during a particularly hot summer period, and revolves around the interaction between Tom, his sister Barbara and Tom's partner Helen. Tom is passionate about making the planet he lives on the best it can possibly be. Helen, his partner loyally supports him and is almost as passionate! Barbara is far more pragmatic about Tom's passion. She works as a school teacher and owns her own flat where most of the action takes place. The play was first performed in 1985 as part of the SHORTS AT THE WHARF program to celebrate the opening season of the WHARF THEATRE, Sydney. Its message and sentiments are still very relevant today.

#### Available Roles:

1 male 30-40s (or thereabouts): TOM

1 female 20-30s: HELEN

1 female 30-40s: BARBARA

#### 2 Down Came a Jumbuck

by Ian Austin

An advertising agency (in the 1890s!) is trying to create a national song for a special client. The office is staffed by Hubert, the conservative boss, Miss Winnie Church, the precocious (for the 1890s!) creative director, and the budding copy-writer Andy (nicknamed Banjo) who struggles to maintain rationalism in an environment of increasing nonsense. An apocryphal (dubious) story about our first Australian Prime Minister, Sir Edmund Barton. Again first presented in the 1980s but with a message and sentiments that remain very relevant to continuing discussions today!

#### Available Roles:

1 male late teens/early 20s: ANDY

1 male 30-50s (or thereabouts): HUBERT

1 female 20-30s: WINNIE CHURCH

Consideration will be given to the possibility of one person doubling up the roles of:

1 Tom (in Play 1) and Hubert (in Play 2)

2 Helen (in Play 1) and Winnie Church (in Play 2)

Auditionees may read with this in mind.

**Audition date:** Tues Aug 25th 2020 at 7.30pm. Please arrive early to complete an audition form. Closed auditions, with someone to read against. **Audition Venue:** Stirling Community Theatre (SCT), Druids Ave, Stirling

**First Read:** Thursday Aug 27th 2020. **Season:** Thursday Aug 27th to Sunday Nov 23rd 2020 (includes bump in, tech & dress rehearsals as per rehearsal schedule, performances and bump out). All rehearsals and performances at the Stirling Community Theatre. **Opening Night:** Friday November 13th 2020 at 8pm.

**Matinees:** Sunday November 15th and November 22nd 2020 at 2pm. **Evenings:** Fridays Nov 13th and 20th, Saturdays Nov 14th and 21st 2020 at 8pm. **Audition information:** Available from director at bronwyn@skymesh.com.au

# LIONS UPDATE



Lions Club of Torrens Valley have been enjoying the face to face meetings but unfortunately it appears that this may change in the very near future should South Australia have more positive cases of Covid.

Remember to keep safe and do the 3!

Arbor Day (pictured) at Gumeracha turned out to be lovely day weather wise and with 74 Gumeracha Primary School students, teachers and parents planting 1080 trees the free

sausage sizzle, provided and cooked by Club members, was well received.

The club donated a trailer load of firewood (trailer excluded) to the Birdwood Park Committee for them to raffle as a fundraiser. Two members loaded the firewood which was generously donated by Lion Bob Willoughby.

The Club 5c & 10c Drive continues with the donation boxes placed in Kersbrook Chemist and Kersbrook Hill

Wines, Gumeracha Top Shop, Post office, The Good Pantry Cafe and Library, Cudlee Creek Tavern, Mt Torrens Hotel, Birdwood Service Station, Chemist and Lovells, Mt Pleasant Butcher, Mt Pleasant Bakery and Lovells.

Our Club thanks these local businesses for their support.

Please support these local businesses as they provide much support not only to our Club but to many clubs throughout the area.

## Birdwood Park & Sporting Clubs Association Inc

# AGM

To be held Wednesday, August 12th at 7pm at the Birdwood Park Clubrooms. All welcome!

For more information, please call Matt Parkin on 0466 116 727.

*The Birdwood Park is owned by the community and is run entirely by Volunteers. The Committee manages, maintains and develops the Birdwood Park, aiming to provide a safe, secure and attractive recreational area for the local community.*



## Rebekha Sharkie MP

Federal Member for Mayo

### Do you need free tax help?

A tax help volunteer is available to assist residents who earn \$60,000 a year or less

Book your free appointment at Rebekha's Mount Barker electorate office on any Tuesday between 10am & 2pm, from July 28 to October 27

Bookings essential so call 8398 5566

Rebekha.Sharkie.MP@aph.gov.au | [www.rebekhasharkie.com.au](http://www.rebekhasharkie.com.au)



# SALA at Fabrik Lobethal

## Continued from page 1

For over twenty years, the SALA festival has celebrated visual art and artists, inviting art enthusiasts to travel far and wide. In 2020, the aims of the festival have not changed, but the ideas of creative thinkers (busy planning covid-safe SALA exhibitions) have unfurled a burst of innovative approaches that deliver art in new ways.

Fabrik's feature artist, Jane Skeer, pursued the idea of healing after a Country Arts SA art residency on Kangaroo Island this year. Her artwork emerged from her experience of the new landscape that should have been familiar to her. But nothing prepares you for an unrecognizable home; it creates a divide between knowing and seeing as landmarks are gone, people are changed, and emotions are amplified. By exhibiting at Fabrik, Jane links the experiences between the Adelaide Hills and Kangaroo Island, two areas that shared the same smoke-filled sky in one dreadful summer.

Melinda Rankin, Director at Fabrik, asked Jane to exhibit after she

saw images on social media of Jane drawing with Xanthorrhoea stumps on Kangaroo Island. Melinda said, "For me it felt like a really good way to connect two fire affected communities, and acknowledge that, even though the focus from the bushfires has turned to covid, these two communities are still grappling with their recovery."

"The way Xanthorrhoea regenerate and shoot out these huge flowers in Lobethal Bushland Park provides such a symbol of hope for us," she said.

Jane collected the burnt Xanthorrhoea stumps around Kangaroo Island but found herself so emotional that she took a hammer to one of them. She was stunned to see reds and oranges, colours reminiscent of the fires, jump out of the tiny root fragments as she struck them. This process created the marks on the works called *Why?* on exhibition at Fabrik. There's so much more to this exhibition, please visit Fabrik's social media accounts or website for more information.



*Embedded Landscape exhibition at Fabrik Arts + Heritage: Anthony Peluso (Country Arts SA), Jane Skeer (artist) and Melinda Rankin (Fabrik Director). The exhibition is open Thursdays to Sundays, 11am to 4pm throughout August.*

## FABRIK and Bushfire Recovery

Immediately after the fires, Melinda Rankin started exploring Fabrik's role within the community and her first response was to offer Fabrik's exhibition space as a Bushfire Recovery centre.

"We started to explore ways of presenting our programs in other parts of the Fabrik site," Melinda explained. "Then, once the covid restrictions occurred, we explored it all over again, asking questions like: 'How can we help people connect when we can no longer gather? What impact can an arts organisation have in a community

during such challenges? How can we help people gather within a creative context?'"

There is no playbook for this pandemic and creative thinking goes a long way to maintaining sanity and connections within communities. It's as simple as having a reason to connect, even if socially distanced, and to do/create/play/produce something with your hands while you talk.

Fabrik support the community in many ways through exhibitions, workshops, and gatherings. The 'What I Hold Dear' online exhibition, inspired by stories of what people took with them when they

evacuated, will showcase community photographs of what people value in their lives. Submissions are open to everyone (and don't need to be bushfire related). The exhibition will be launched soon, visit Fabrik's website at <https://fabrik.org.au/sala-gallery>.

There are so many offerings of community gatherings and workshops at Fabrik, it would pay to visit their Facebook page or website for more information. You can also sign up for their newsletter (Subscribe to News button) so you don't miss out on events in the future.



[www.bhprealestate.com.au](http://www.bhprealestate.com.au)

## bh partners Real Estate

Phone: 8389 7555 Email: [bh@bhprealestate.com.au](mailto:bh@bhprealestate.com.au)

*Our Goal is to help You Achieve  
Your Real Estate Dream!*

*Contact our Team for all Your Real Estate needs!*





# OUR SUSTAINABLE HOME – TURNING DREAMS INTO REALITY

If you are thinking about building a sustainable home or making alterations to your current home, then this workshop will be valuable to you. **“Our Sustainable Home – Turning Dreams into Reality”**, presented by Andrew Davidson, a property development consultant, who will take you through the processes and decisions he and his partner made when building their dream sustainable home.

Andrew will cover all the issues from site selection, submitting plans, contractors,



room layout and accessibility. Even life without air-conditioning or flushing loos!

Andrew will share his own experiences and professional advice so that you can enjoy the process of turning your dream into a reality.

The workshop will be held at **Hills Environment Centre, 4**

**Crescent Drive, Norton Summit, on Tuesday September 8th** starting at 7pm.

A light supper will be provided (depending on COVID restrictions), and the cost is a gold coin donation.

Bookings are essential so please email [val-hunt@ahnrc.org](mailto:val-hunt@ahnrc.org) to register your attendance.

## Barb's Bowen & Massage

*Integrated Natural Therapies*  
*Barb Collins Dip BT*

**Terlinga Road, Tungkillio**

*Mondays, Tuesdays,  
Thursdays and Fridays, 9am-5pm*

- **Bowen / Massage**
- **Mayan® Abdominal Massage**
- **Lifeline Kinesiology**
- **Oncology Massage**
- **DoTerra® oil massage**
- **Needle Less Acupuncture**
- **Detox Foot Spa**

• Pensioner Discounts

**0437 387 070**

Or: 8568 2547 A/H,  
[www.barbsbowen.com.au](http://www.barbsbowen.com.au)

# printing

- businesscards
- fliers & brochures
- fridge magnets
- invoice & statement books

# advertising

- classifieds adverts from \$5 for 30 words or \$8.50 for 30 words and 1 logo/photo
- display advertising from \$30 to \$230
- discount rates for online editions!

**Along the Grapevine**

mob. 0419 034 126 email. [editor@alongthegrapevine.com](mailto:editor@alongthegrapevine.com)  
PO Box 47, Lobethal SA 5241

# \$5 Classifieds

## COMING EVENTS



**Open Every Saturday,** 8am – 12 noon. Mt Pleasant Showground. COVID-19 safe practices in place. Fresh Local Produce. Click & Collect also Available. Online Store. <https://mt-pleasant-farmers-market-inc.myshopify.com/>

**Advertise here**  
**\$5 for 30 words**  
**\$8.50 with logo/photo.**

**EMAIL YOUR COPY TO:**  
[editor@alongthegrapevine.com](mailto:editor@alongthegrapevine.com)



**Every Saturday in September!** 8am to 1pm, Mount Pleasant Showgrounds, Melbourne Street. Entry: Gold coin donation. Great range of stalls featuring quality plants, garden furniture, décor and garden care products, together with our regular farmers market fare. For more information or to become a stallholder, contact us: [info@saspringgardenfestival.com.au](mailto:info@saspringgardenfestival.com.au) or 0418 301 121

## COURSES, PROGRAMS & CLASSES

**MUSIC LESSONS, KERSBROOK.** Piano/Keyboard/Music Theory. Dawn Cowling. Associate member of the Music Teachers Association of SA. 0427 170 082

**Dru Yoga with Vanessa.** Tuesday evenings at the Birdwood Institute, 6:30-8pm. Find peace and stillness with gentle, flowing movement and deep relaxation. Contact Vanessa on 0402 603 498.



**Kersbrook Yoga** - Tuesday 7pm, Kersbrook Hall. Yoga nourishes our physical and mental health. Enquiries: Andrea 0415 700 172

**NEW TO THE HILLS** - Local Exchange Trading Scheme. A community who exchange goods and services without the need for cash. Fb. Hills and Murrumbidgee LETS or phone 0422 468 487

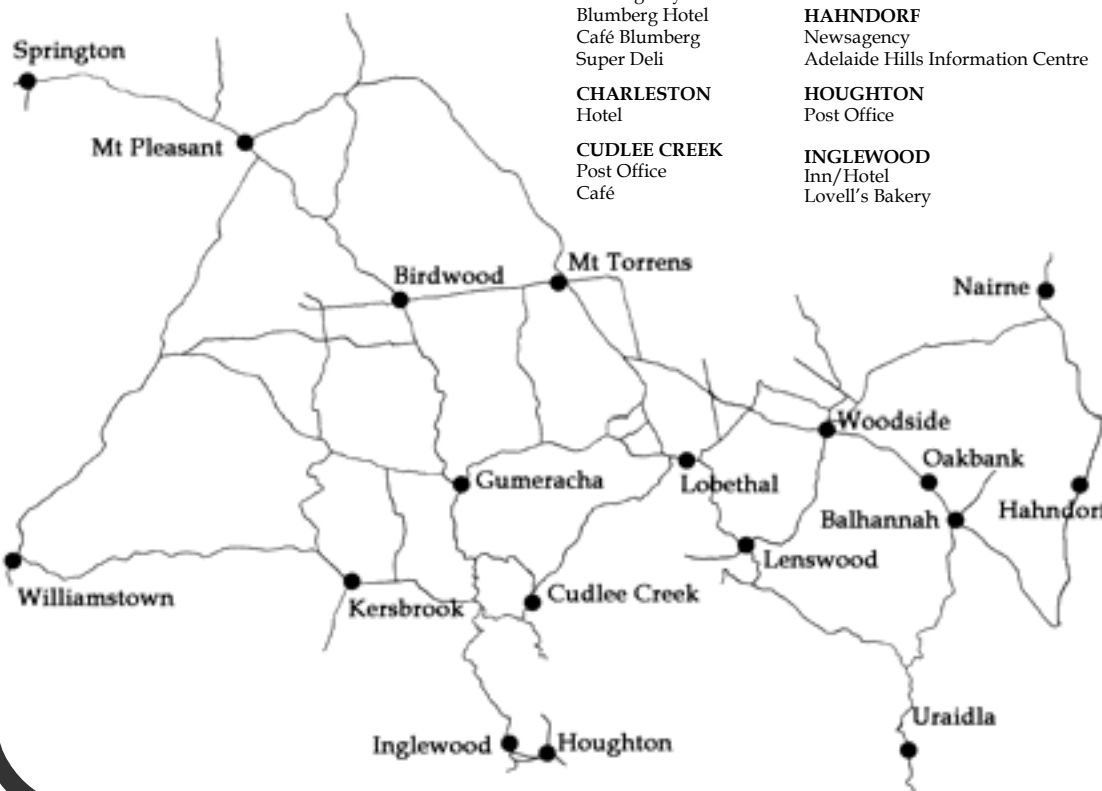
## FOR HIRE or RENT



**Gumeracha Town Hall** is available for Hire for your Function! Please contact Mr RJ Brooksby OAM on 8389 1418 for details.

**Hall for Hire.** Consider the RSL Hall, Wattle Street, Lobethal. Competitive hall hire rates, new Diggers kitchen, new equipment and amenities, air conditioned. Bookings – Jo Kirlaw: 0418 194 408

## Along the Grapevine is available from...



**BALHANNAH**  
Foodland

**BIRDWOOD**  
Lovell's Bakery  
Foodland  
Newsagency  
Blumberg Hotel  
Café Blumberg  
Super Deli

**CHARLESTON**  
Hotel

**CUDLEE CREEK**  
Post Office  
Café

**GUMERACHA**  
Soldier's Memorial Hospital  
General Store  
Post Office  
Hotel  
Torrens Valley Community Centre

**HAHNDORF**  
Newsagency  
Adelaide Hills Information Centre

**HOUGHTON**  
Post Office

**INGLEWOOD**  
Inn/Hotel  
Lovell's Bakery

**KERSBROOK**  
Garage / General Store

**LENSWOOD**  
General Store

**LITTLEHAMPTON**  
Shell  
Foodland

**LOBETHAL**  
Fodder Store Newsagency  
Onkaparinga Meats  
Foodland  
Amberlight Deli

**MT PLEASANT**  
Bakery & General Store  
Post Office  
Lovell's Bakery

**MT TORRENS**  
General Store / Post Office

**NAIRNE**  
Corner Takeaway

**NORTON SUMMIT**  
Community Centre

**OAKBANK**  
Pizza Bar  
Chaff and Fodder

**SPRINGTON**  
General Store

**URAILDA**  
Friendly Grocer

**WILLIAMSTOWN**  
Bakery

**WOODSIDE**  
Motors / Caltex  
Foodland  
Dunn's of Woodside (Butcher)  
Lovell's Bakery  
Positive Aging Centre

# \$5 Classifieds

## FOR SALE



**Land for Sale** - Very Cheap. 440 Acres \$160,000. That's approx \$362 an acre. Close to Morgan. Can build your dream home or great getaway. Highway frontage. No power or water. Ph 0433 531 105.

## TRADES & SERVICES

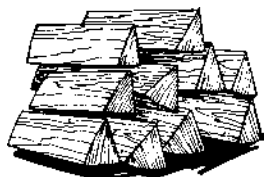


Precision and general machining. Manufacturing, restorations and repairs. Machine and product design utilising 3D Cad and electronics design experience. Supporting local. **Electro Cad** www.electrocad.com.au John: 0439 882 978

**ALL AREAS ELECTRICAL S.A.** Call us for your FREE quote. Specialising in ceiling fans, Split systems air-conditioning, general power & lighting. No job too small! Facebook or 0408621424



**HOWES PAINTING**, 40 years experience! Residential, Commercial, Maintenance, FREE QUOTES. Phone Terry on 0413 277 172



**Sick of splitting Firewood?** I will come to your property to cut and/or split your felled/fallen or salvaged wood. Call Angus on 0412 395 017. Fully Insured.



**MURPHY FRAMING, Birdwood.** Artwork, 3D objects, Needlework, Mats. 600+ frame choices. Conservation options. Easier selection - Visualisation program gives completed frame preview. **WATER-COLOUR CLASSES**, Beginners Welcome. Enquiries: 0402 594 354



**Support for individuals and families experiencing financial difficulties residing in the Adelaide Hills.** Access to pantry items, bread and fresh produce. Provision of food & fuel vouchers. Part bill payments and school costs. No Interest Loans available. Call 8339 4400, 1 Euston Road, Aldgate

**Advertise here \$5 for 30 words \$8.50 with logo/photo.**

**EMAIL YOUR COPY TO:** editor@alongthegrapevine.com

★★★★★★★★



★★★★★★★★  
**Supreme Painting** 35 years experience. Prompt and Reliable. Interior and Exterior. Wallpaper removed. Colour Consultant. Quality service. Seniors Discount. Free quotes. Lic 19836. Mobile 0419 848 339  
★★★★★★★★



**GREENIE'S Small Engine Repairs.** Service & Repairs to: Lawnmowers, Ride-ons, Brush Cutters, Chain Saws, Water Pumps etc. Phone Graham Green, 0428 891 542. 3 Smithers Court, Kersbrook.



**FIREWOOD MADE EASY.** 10 years experience splitting/cutting wood. Servicing Adelaide Hills area, using quality machinery, no job too big or small. Call Geoff on 0409 001 421

**Hills Fencing** - We supply quality affordable fencing throughout the hills and surrounding areas. Custom designed timber gates and entrances. Horse arena mirrors, horse yards, paddocks and all general timber and wire fencing. Retaining walls, picket and paling fences. Tight access mini digger for post hole drilling/trenching, bucket work/site clean up. **Phone Wayne Copping on 0428 821 005**

**Spurr Plastering** - Render, Texture, Hebel and Foam Installation. Quality Work, Reasonable Prices, Over 30 Years Experience. Barossa, Hills and Mid North, Northern Suburbs. BLD 146 950. Call Peter Spurr on 0417 808 637



**J S CARPENTRY** BLD LIC. 28 63 85 All Aspects Of Quality Carpentry Call **Justin Sheedy** 0400 226 164 Prompt, Reliable & Quality Service. FREE QUOTES.

## WANTED

**Land wanted in the Hills area** for private build eco/off-grid house for self-sufficient retired couple. Up to 5 acres but anything considered. Contact Johnson 0410 149 850 or email hayseed@live.com

**Wanted to buy** - reasonably priced motor home with shower and toilet for touring. Phone 0433 531 105

**Advertise here \$5 for 30 words \$8.50 with logo/photo.**



## TRADES & SERVICES GUIDE

 <p><b>SHIRE HOMES</b> Quality Strength</p> <p><b>New Homes &amp; Extensions</b></p> <p><i>Shane Williams</i> Mobile: 0418 858 048 Phone: 8388 4683 BLD 209052</p>	<p><b>Woodside SELF STORAGE</b></p> <p>Sizes from 9m<sup>2</sup> Reasonable Rates</p> <p>Phone Melissa - BH Partners 0438 252 207 8389 4133</p>	<p><b>Haynes Plumbing</b> Kersbrook</p> <ul style="list-style-type: none"> <li>• General Maintenance</li> <li>• Guttering Repairs</li> <li>• Drains &amp; Septic Systems</li> <li>• Hot Water Repairs &amp; Replacements</li> <li>• New &amp; Renovation Work</li> </ul> <p>Phone Tony 0408 056 155</p>	<p><b>New Rubble Driveways Constructed</b></p> <p><b>Old Driveways Repaired</b></p> <p><b>General Earthmoving</b></p> <p><b>Call Phil on 0408 083 488</b></p>
--	---	---	---

<p><b>JURY'S LIQUID WASTE</b></p> <p>SEPTIC TANKS   HOLDING TANKS RAINFALL TANKS WINERY WASTE   GREASE TRAPS PORTABLE TOILETS BIO CYCLE &amp; RI TREAT CLEANING SPECIALISTS</p> <p>Ph: 8563 9190 Mob: 0407 603 558</p>	<p><b>MJD BOBCAT &amp; TIPPER HIRE</b></p> <p>✓ SITE CUTS ✓ LANDSCAPE PREP ✓ DRIVEWAYS ✓ SITE CLEANUP ✓ HOLE BORING ✓ QUARRY PRODUCTS ✓ TRENCHING ✓ LASER LEVELLING</p> <p><b>Call Michael ~ 0412 120 557</b> Free quotes. Full insurance coverage. <a href="http://www.mjdbobcat.com.au">www.mjdbobcat.com.au</a></p>	<p><b>Building Design &amp; Architectural Drafting</b></p> <p>COUNCIL PLANS &amp; APPLICATIONS DESIGNING PLACES 0424 364436 Carpentry / Building reg. BLD283020 <a href="http://www.designingplaces.com.au">www.designingplaces.com.au</a></p>	<p><b>Jim Rigby Concreting &amp; Paving</b></p> <ul style="list-style-type: none"> <li>• Driveways</li> <li>• Shed Floors</li> <li>• House Foundations</li> <li>• Retaining Walls</li> </ul> <p>Adelaide Hills, Barossa, Fleurieu &amp; Murraylands M: <b>0408 081 588</b> <b>FREE QUOTES</b></p>
--	--	--	---

**Fixed price Quotes**

**All work fully Guaranteed**

[adelaidehillsbuilding@gmail.com](mailto:adelaidehillsbuilding@gmail.com)

# Adelaide Hills BUILDING

BLD301891

- Home Renovations • Extensions
- Carports & Pergolas

## 0437 447 698

[www.adelaidehillsbuilding.com.au](http://www.adelaidehillsbuilding.com.au)

**Over 25 years experience**

**No job too big or too small**

# HILLS BRAKES CLUTCH AND SUSPENSION

## JOHN RICE

Est. 1995  
30+ years experience

Phone 8568 5314  
2912 Onkaparinga Valley Rd, Birdwood

**BRAKE and SUSPENSION SPECIALIST**

- ★ Spare Parts Supply or Supplied & Fitted
- ★ Wheel Alignment
- ★ Alignment Correction Kits
- ★ Suspension & Steering Repairs
- ★ 4WD Suspension and Lift Kits
- ★ Horse Float & Trailer Brakes
- ★ Under Car Repairs
- ★ Clutch Repairs
- ★ Disc & Drum Machining
- ★ CV Joint & Shaft Replacement
- ★ Shock Absorbers, Struts & Coil Overs
- ★ Re-sleeved Cylinders, bonded Shoes



**IRONMAN DEALER**



**~ Automotive Batteries NOW AVAILABLE ~**

**STANDARD PASSENGER VEHICLES, 4WD, RESTORED VEHICLES, HOT RODS, STREET MACHINES, RACE-RALLY AND SPORTS CARS.**