

**Advertise
HERE**

IN **COLOUR**
from as little as

\$41

per issue!

0419 034 126



Volume 27, Number 3

PO Box 47, Lobethal

Tel. **0419 034 126**

February 26th - March 11th, 2022

Email. editor@alongthegrapevine.com

Amberlight to Bierhaus Show & Shine

By Kendrea Rhodes - Weekends in the Adelaide Hills resound with the low hum of motorcycle engines of all kinds — vintage, classic, modern, sports, cruisers, scooters and more — it's a tune of tradition, inclusion, and camaraderie, ringing through the hills and valleys. For nearly a century, many motorcyclists have appreciated the ritual of riding through the Adelaide Hills, enjoying local communities and landscapes, particularly the many scenic roads to Lobethal.

**CONTINUED
ON PAGE 5**



Matt Randell and Daryl House at last year's Amberlight to Bierhaus Motorcycle Show & Shine in Lobethal. Organised by the Levis Motorcycle Club for the benefit of the local community, the event will run again this year on Sunday March 6th from 12-3pm, as the first event in the Club's centenary year.

Photos
courtesy
Matt
Randell.



RAA

APPROVED
CRASH REPAIRER

Mt. Pleasant Crash Repairs

Recommended repairer for **ALL**
major Insurance Companies

- BAKING OVEN FOR FACTORY FINISH
- COURTESY CAR BY ARRANGEMENT
- 24 HOUR WINDSCREEN REPLACEMENT
- ALL TYPES OF VEHICLES REPAIRED



RAA

APPROVED
MECHANICAL

Mt. Pleasant Mechanical Centre

Now specialising in heavy vehicles,
including caravans, buses and trucks

FREE CALL 1800 801 180

9 Railway Terrace, Mount Pleasant

24 HOUR - 7 DAYS TOWING

“YOU MATTER TO GOD”

Kersbrook Church of Christ

Contact Pastor David on 0458 589 996 or someone at your local church to find out more of God's love for you.

Christianity Needs Community - John Stott is a well-known and respected Pastor, teacher and author. If you are a Christian perhaps the following quote speaks to you.

“The Christian life is not just our own private affair. If we have been born again into God's family, not only has He become our Father but every other Christian believer in the world, whatever their nation or denomination, has become our brother or sister in Christ. But it is no good supposing that membership of the universal Church of Christ is enough; we must belong to some local branch of it. Every Christian's place is in a

local church, sharing in its worship, its fellowship, and its witness”. -John R. W. Stott.

The writer of Hebrews has much the same thing to say in Chapter 10:24-25:

We should not stop gathering together with other believers, as some of you are doing. Instead, we must continue to encourage each other even more as we see the day of the Lord coming.

Jesus often used illustrations to teach and to challenge those who gathered around to hear Him speak. One of these illustrations we know as the ‘Parable of the Sower.’ More correctly it should be known as the ‘Parable of

the Soils.’

In the Gospel of Mark chapter four, Jesus told of a Sower sowing his seed. In those days this was done by taking a handful of seed and with a sweeping motion spreading it on to the ground.

Some of the seed fell on to the hard paths and birds quickly ate it.

Some fell on to stony ground, grew for a little while and then shriveled up and died.

Some fell among thorns and while it tried to grow other things got in the way, (the cares of this world) and choked it. This seed also produced nothing.

But some seed fell on good ground and yielded a

crop that sprang up, increased and produced: some thirtyfold, some sixty and some a hundred.

Jesus later explained to His disciples that the seed represents God's Word and the soils the different ways people respond to it. Some ignored it; some responded for a short time, others were too busy to bother too much.

But some heard God's Word gladly, and produced the crop that God expects of His people. Which type of soil do you think you are?

With the regular addition of God's Word, we can change our soil and also produce a good crop.

Because we really do matter to God.

Klose's



OPEN EVERYDAY

7.30AM - 9PM

BALHANNAH | BIRDWOOD | LITTLEHAMPTON
LOBETHAL | NAIRNE | WOODSIDE

CLOSED CHRISTMAS DAY

Descendents create GG's Place in historic Kersbrook Hall



Kersbrook Public Hall President Joan Playford OAM, with GG's Place founders, sisters, Lyn Rovelli (centre) and Elaine Wildman.

There's been plenty of activity within the Kersbrook Public Hall recently, where renovations and alterations have brought the significant landmark building into a new age.

Local residents Ms Elaine Wildman and

sister Lyn Rovelli have opened GG's Place [January] in the Hall Supper Room on Thursdays, Fridays and Saturdays from 8.30am to 2.30pm for espresso coffee, teas and light meals.

"We really want it to be a community-

spirited place," Ms Wildman said, "a bright and cheerful place where people in the town can meet and meet new people as well. We want to encourage locals in the town to display their creative talents as well and to learn about the

hall and the town."

In support of the venture, the Kersbrook Hall Committee and Friends have refurbished elements of the Supper Room and adjacent Hall stage and backstage area, while Ms Wildman's small but dedicated and skilled team have done an amazing job revamping and upgrading the kitchen and supper room ready for enjoyment.

A newly formed Hall History Hub is setting up a Kersbrook history display in the stage area as well, featuring material collected from local families, many of whom are descendants of the original families who moved into the area from 1846. The History Hub welcomes all interested residents (and readers) to join them in further research. The Hall

email is kersbrookhall@gmail.com

Kersbrook Hall Committee President Ms Joan Playford OAM said GG's Place was a wonderful addition to existing activities at the Hall, which was established in 1915 by local volunteers as a public space for educational and recreational purposes.

"To those who do not know Elaine and Lyn, descendants they are descendants from one of Kersbrook's early settlers, John Powell, who arrived in Australia from Wales as an assisted migrant in 1855," Joan said. "His grandson, Evan James Powell, assisted in the building of our beautiful old lady," she said. "How fitting that the tradition of giving to the community is being carried on by his great granddaughters."

DEADLINE

For next issue, ads & editorial
Tuesday, March 8th, 2022

Publication out
Saturday, March 12th, 2022

Country Lifestyle & Broadacre Farming Property Specialist

I love my country life backed by doing an honest day's work in one of the most beautiful places on earth. Personal integrity is paramount as it truly produces respect, reliability & results.

Richard Inwood

Richard Inwood
0428 606 420
richard@inwoodrealestate.com.au
134 Melrose Street, Mt Pleasant
Phone: 8568 2309 RLA 303166

LOOKING TO BUY

LOOKING TO SELL

TESTIMONIALS

REQUEST AN APPRAISAL



Property
group

**Supporting you to sell
your property with
care and confidence.**

A New Look for 2022

Having provided real estate services to the greater Adelaide Hills for almost 30 years, we have taken some time to review how we can better serve you and your real estate needs.

We are excited to start 2022 with a vibrant new look which will reflect our professional and individual, client centred approach to residential real estate sales. Rest assured, the agency and team remain the same, it will only be our visual brand that will change. You will begin to notice new office signage, new brochures and of course new For Sale signs.

Family and Friends Referral Program

To celebrate the launch of our new brand, we are giving you a chance to receive a \$600 prepaid VISA card.

Refer a family member, friend, colleague or neighbour to us to sell their property and we will give you \$600* to say 'Thank You' when their property sells!

*Terms and conditions apply

Visit www.cepg.com.au/referrals for more info.

Contact us

0488 972 888

mail@cepg.com.au

www.cepg.com.au

Birdwood ✓ Mannum ✓ One Tree Hill

Amberlight to Bierhaus Show & Shine



The inaugural Amberlight to Bierhaus Motorcycle Show & Shine, Sellicks Beach Historic Race display on the Lobethal Bierhaus lawn in 2021.

The Amberlight Motorcycle Café in Lobethal has been a traditional stop enroute since the early 1930s and on Sunday March 6th, riders will stop for longer than usual to partake in the 2022 Amberlight to Bierhaus Motorcycle Show & Shine.

Along with the many and varied motorcycles, visitors can also enjoy trade displays, sausage sizzles, local business cuisine and historic

exhibits. The Sellicks Beach Historic Motorcycle Race exhibit will be on the front lawn of the Lobethal Bierhaus with many pre-1963 motorbikes that currently race at Sellicks.

The Amberlight to Bierhaus Show & Shine 2022 is all inclusive, with trophies for many categories including cruisers, sports bikes, naked café racers, classics, sidecar, chopper/bobber, trail/

motard, adventure, scooters and kids' bikes of all kinds. And these trophies are not only sponsored by the Lobethal Bierhaus, but they embody that unique local touch with labelling using the Bierhaus' custom printing equipment.

And yes, you read it correctly, "kids' bikes of all kinds." This competition category is available for children to enter any bike they ride. One of the organisers, Daryl House, understands

that looking at these wonderful machines from all eras is a great day out for many people, including families, and a dream for many children.

Daryl said, "Kids are the motorcyclists of the future and many ride bikes right now. They get missed in other show and shines, but not this one."

Children can enter free of charge, with trophies allocated on the day. They can enter a pushbike, scooter, electric scooter or bike, motorbike or even a

four-wheeler. Daryl said the kids' bike section is a deliberately selected secure position, easy to access and safe for children and their bikes, away from the busy traffic areas.

Amberlight Motorcycle Café owner, Joe Knight said that last year, at least one km of the Lobethal Main Street was lined on both sides with an array of motorcycles of all sorts. The event was bigger than imagined with over 3,500 motorcycles visiting the area.

CONTINUED ON PAGE 9

AMBERLIGHT TO BEIRHAUS SHOW AND SHINE
JUNIORS EXHIBITION

**MOTORBIKES
&
BIKES**

Open to all girls and boys aged
15 years and under. Dirtbikes, Quad,
scooter, pushbikes. Enter your pride
and joy from 11am entry on the day
at the Bierhaus Carpark.
Trophy and prizes to be won.

Sunday 6th of March

BECAUSE DREAMS ON TWO WHEELS START EARLY



Mt. Pleasant Mechanical Centre

Now specialising in heavy vehicles,
including caravans, buses and trucks

FREE CALL

1800 801 180

9 Railway Terrace, Mt Pleasant

RAA

APPROVED
MECHANICAL

10% OFF

ALL TYRE SALES!

Offer valid until March 31st, 2022

Research about the Red Cross Bushfire Recovery Program

Seeking residents of Adelaide Hills Council to discuss their experience of the Red Cross Bushfire Recovery Program.

Our team at the University of Melbourne has been commissioned to conduct an external evaluation of the Red Cross Bushfire Recovery Program. This research seeks to understand how the Red Cross can best support communities impacted by bushfires; what works in the current recovery program; and what could be improved.

In the **Adelaide Hills**, we are hoping to speak with service providers and community members who have engaged with the Red Cross.

What does it involve?

- An interview or focus group discussion (30-60 min), in person or online.
- We will ask about experience of bushfire recovery in your community and experiences you have had with Red Cross.
- Results from the research will be shared with all partici-

pants at the end of the project. Results will also be shared with Red Cross in an anonymous format (participants not identified), to strengthen future program development.

TO REGISTER INTEREST, PLEASE CONTACT:

Dr Claire Leppold (Research Fellow),
Email: claire.leppold@unimelb.edu.au

Phoebe Quinn (Research Fellow), Tel: +61 3 8344 3097,
Email: phoebeq@unimelb.edu.au

Lions News

A few weeks back a Certificate of Appreciation was presented by Lions Lady, Kath Phillips, on behalf of the Lions Club of Torrens Valley, to Wilma DeSalis for her donations to the Club of crocheted rugs for our raffle.

Lion Club members Butch and Peter have been working on the bus shelter at Birdwood, with painting completed and trellis to be replaced on each end.

Our coin drive continues and money

raised helps our Club assist and support those in need in your local community.

The club activities have been very slow for the beginning of the year with members attending regular Club meetings and social coffee mornings. If you would like to join us for a coffee morning and find out more about Lions and our members, do not hesitate in contacting us for more details: Phil (Secretary) - 0419 830 754 or Dave - 0417 821 107.

Klose's Cellarbrations

STOCKING A HUGE RANGE OF ADELAIDE HILLS WINES,
LOCAL BEERS, CIDERS & DISTILLED SPIRITS AS WELL
AS YOUR FAVOURITES.

OPEN EVERYDAY 10:00am – 9:00pm

Locals supporting Locals

Woodside | 25 Onkaparinga Valley Road, Woodside • Telephone 08 8389 7989
Nairne | 121 Princes Highway, Nairne • Telephone 08 8366 2232

Frosty Flats

Open March 12th & 13th

Frosty Flats is opening its garden gate to a riot of colour in an informal Cottage Garden on the 12th and 13th March with Open Gardens SA.

As the paths meander around, the garden wraps itself around you making you feel a part of it. The garden is busy with Butterflies and Bees visiting the array of flowers growing in the different rooms of the garden which consist of, Roses, Cannas, Buddleias, Geraniums, Sedums, Asters, Penstemons, Succulents and deciduous Hibiscus.

Areas shaded by rustic Arbours draped in climbing Roses, Prunus and Crabapple, have aged logs to sit on, or you may like to sit on the veranda that wraps around the stone farmhouse giving a different view of the garden from each direction while enjoying a Devonshire Tea.

Fish ponds are a feature around the garden. Placed amongst the foliage, they provide a coolness to the garden. Old farm machinery that was once used to run the farm is nestled amongst the beds. Old wooden ladders support climbing Roses and Clematis.



The garden was started in late 1988 and was a bare canvas with just two Apple trees and the rest was ploughed each year for growing vegetables. The soil is a rich sandy loam after many years of cow manure being added to it. The garden is watered with 2,500 parts per million salty bore water run through in-line drippers.

I don't spray for bugs or disease in my garden - I let the beneficial bugs do their job!

Frosty Flats is once again supporting Cancer Council SA 'Ride for a Reason'. The garden is open from 10am till 4.30pm both days and entry is \$8 per person, under 18 free.

Devonshire Teas and light lunches are available all day both days. We will be following Covid safe guidelines.

Frosty Flats is located on the corner of Muellers and Onkaparinga Valley Roads, Birdwood.

Discover, Play, Bikeway! 2022

After a hugely successful inaugural event in 2021, Adelaide Hills Council is pleased to offer up Discover, Play, Bikeway! again on Sunday 6 March 2022, from 10am.

Ride or walk the Amy Gillett Bikeway and discover an array of pop-up food, music, art, and performance options from Oakbank, to Woodside, Charleston and Mount Torrens! Whether by wheels, hoof, or foot, the Bikeway is a perfect recreation trail, with up to 15km of flat, bitumised surface leading through picturesque towns, past

iconic hills businesses and thriving wineries. Enjoy pop up music, art, food and performances from local artists and eateries.

There will be three hubs along the Bikeway that represent the ideal opportunity to rest and spend time supporting local businesses, community groups, and artists. All hubs will offer parking, toilets, bins, and refreshments. Plan your day around one or more of these locations, or meander the whole way!

This six hour event is free with no tickets required!

TERRY WARKE UPHOLSTERY

97 Main Street, Woodside
Phone: 8389 7644

For All Your Upholstery Requirements

Open Tuesday to Friday & Saturday mornings
CLOSED SUNDAYS & MONDAYS



www.bhprealestate.com.au

bh partners Real Estate

Phone: 8389 7555 Email: bh@bhprealestate.com.au

*Our Goal is to help You Achieve
Your Real Estate Dream!*

Contact our Team for all Your Real Estate needs!



'Whatever'



Eve and Mike Painter, together with Ann and Adrian Beacham, at the opening of their joint mixed media exhibition, 'Whatever'.

Two talented couples, Ann and Adrian Beacham (from Birdwood) and Eve and Mike Painter (from Eden Valley), have joined forces to present 'Whatever', the latest exhibition now on show at the Top of the Torrens Gallery in Birdwood.

The wide ranging mixed media exhibition features a fabulous array of vibrant, diverse and sometimes quirky creations in glass, pottery, metal sculpture, fibre craft, paintings, leadlight, and beaded jewellery!

Ann produces vibrantly coloured glassware using slumping

and moulding techniques to create items ranging from functional bowls and dishes to decorative sculpture. She also works in stained glass techniques and produces unique Tiffany style lampshades, several of which she has on display in the exhibition, as well as creating leadlight windows on commission.

Using his highly developed skills in forging and shaping metal, Adrian produces 3D sculpture in a variety of forms ranging from quirky insects, animals and birds to large outdoor structures and gar-

den art. Many items use recycled steel and other metals to an imaginative effect including his exhibits of an Emu and her chick, a wise old owl and hungry pelican. It is quite fascinating how he manages to turn a selection of cast aside old rusty tools into little characters full of personality!

Textile and jewellery artist Eve, spins, weaves, knits and crochets a range of fibres, producing beautiful beanies, scarfs and shawls - just perfect for the upcoming cooler months. Using commercial beads and findings, she also makes a range of individual

hand-made ear-rings, necklaces and bracelets, available in seemingly every colour of the rainbow.

With a wide range of creative talents, Mike currently works in pottery (earthenware) and painting, mainly acrylic on stretched canvas, as well as pen drawings enhanced with watercolour. Whilst his subjects vary, he describes them as often having a "natural" basis,

as his flowers, fish, butterflies, piglets, birds (the list goes on) currently on display and awaiting discovery at the Birdwood gallery, certainly demonstrate.

The Top of the Torrens is a community run Gallery & Gift Shop, adjacent the National Motor Museum, at 9 Shannon Street, Birdwood. OPEN 11am to 4pm, Wednesday to Sunday.

The exhibition is on show now, and concludes on 20th March.

Barb's Bowen & Massage

Integrated Natural Therapies

Barb Collins Dip BT

Terlinga Road, Tungkillio

**Mondays, Tuesdays,
Thursdays and Fridays, 9am-5pm**

- **Bowen / Massage**
- **Mayan® Abdominal Massage**
- **Clearings-access, NLP**
- **Oncology Massage**
- **DoTerra® oil massage**
- **Needle Less Acupuncture**
- **Detox Foot Spa**

★★ Pensioner Discounts ★★

Happy to treat everybody, no restrictions!

0437 387 070

or 8568 2547 A/H



Like us on Facebook!

www.facebook.com/grapevine.adelaide.hills/

Subscribe on the website

web: www.alongthegrapevine.com

Amberlight to Bierhaus Show & Shine

Continued from page 5

Joe said, "It was such a family event and brought many people to the Hills. They were positive, respectful, and everyone did the right thing. Many motorcyclists also brought their families to show them the places they ride through each weekend."

There were so many people, that the love fanned out to neighbouring towns who also reported an influx of visitors. Joe said, "A positive event like this challenges stereotypes and displays the broader

spectrum of everyday people who ride motorcycles. It's such a diverse culture of all walks of life."

The idea for the Show & Shine came upon Levis Motorcycle Club member, Daryl House, on a ride just after the Cudlee Creek bushfire. He said the devastation, empty towns, and general feeling inspired him to try to do something to help, something that might bring people back to have fun in the local area and boost local businesses at the same time.

Daryl approached the Levis Motorcycle

Club who proceeded to organise the Club's first Motorcycle Show & Shine event with the Amberlight Motorcycle Café and the Lobethal Bierhaus. Unfortunately, covid hit in 2020 and plans were stalled, but this did not stop the Club, who recognised that the double whammy of covid would generate more devastation for a community already struggling to recover from the bushfires.

The Levis Motorcycle Club run Acusa Park, a motorcycle park in Harrogate. Despite

bushfire damage at Acusa Park, the Club raised over \$2000 at the 2021 Show & Shine and donated it to the Lobethal Bushfire Recovery Fund.

In 2022, visitors can pay a gold coin donation which once again, will be collected for local community initiatives through the Lobethal Community Association. Motorcyclists can enter on the day for \$10 (kids' competition is free) from 11am to register for the show and put their bike on display.

The Show officially

starts for the public from 12 noon until 3pm. As an outdoor event, it is not only covid-safe, but you'll also get a nice Sunday walk up the Main Street of Lobethal, enjoying motorcycles, a great atmosphere and lunch at local venues, including the Lobethal Bierhaus and Amberlight Motorcycle Café. For more information, please visit the Facebook pages of the Levis Motorcycle Club, the Amberlight Motorcycle Café, and the Lobethal Bierhaus (also on Instagram).

printing

- business cards
- fliers & brochures
- fridge magnets
- invoice & statement books

advertising

- classifieds adverts from \$5 for 30 words or \$8.50 for 30 words and 1 logo/photo
- display advertising from \$30 to \$230
- discount rates for online editions!

Along the Grapevine

mob. 0419 034 126 email. editor@alongthegrapevine.com
PO Box 47, Lobethal SA 5241

Strathalbyn SES Unit a first for South Australia

A new South Australian State Emergency Service (SASES) unit to be built at Strathalbyn will become the first in the state with the capability to operate in 'island mode' when completed.

The state-of-art unit will be designated Important Level 4 (IL4), enabling it to operate independently of external utilities for up to 48 hours.

Emergency Services Minister Vincent Tarzia said the unit will have two main buildings and include 36 solar panels and back-up generators to supply emer-

gency power as well as underground water storage tanks with a capacity of 60,000 litres.

"This will be a state-of-the-art facility that is completely self-sufficient to respond to emergencies, offering a high level of protection for regional South Australians for generations to come," Minister Tarzia said.

"The new unit will provide contemporary training facilities including a large, external training ground, modern equipment, easy public access and ample car parking."

SASES Chief Officer Chris Beattie attended the recent sod turning ceremony to officially mark the beginning of construction.

"SASES units provide a place for volunteers and staff to meet, train and coordinate emergency response activities," he said.

"Strathalbyn is a growing regional centre, so it is important we continue to have a strong presence in the area.

"The new facility will help ensure we provide an increased operational response for the town and the

broader Fleurieu Peninsula."

The existing Strathalbyn SASES unit currently has over 30 registered volunteers and responds to approximately 250 Requests For Assistance each year.

A total of 5600sqm of land was purchased from the Strathalbyn Harness Racing Club to develop the new unit which will also be available to other emergency services including the Country Fire Service and South Australian Police.

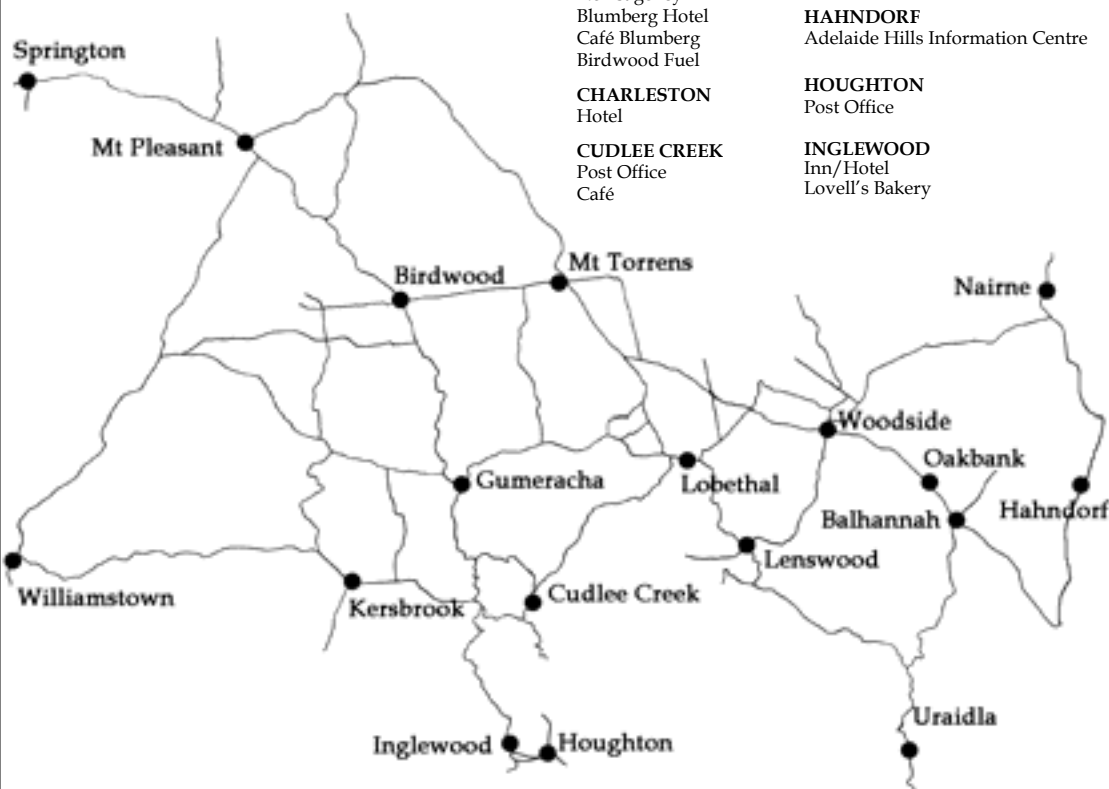
It will have the capacity to house four emergency service vehi-

cles and up to 60 emergency service personnel when construction is completed later this year.

Strathalbyn SASES Unit Manager Andrew Kerslake said the Strathalbyn Unit was established in 1987 and moved to its current site on Murray Street, Strathalbyn in 2000.

"We are always looking for new members to help the community and I encourage people to visit www.ses.sa.gov.au/ volunteer or call 1300 364 587 for more information."

Along the Grapevine is available from...



BALHANNAH
Foodland

BIRDWOOD
Lovell's Bakery
Klose's Supermarket
Newsagency
Blumberg Hotel
Café Blumberg
Birdwood Fuel

CHARLESTON
Hotel

CUDLEE CREEK
Post Office
Café

GUMERACHA
Soldier's Memorial Hospital
General Store
Post Office
Hotel
Torrens Valley Community Centre

HAHANDORF
Adelaide Hills Information Centre

HOUGHTON
Post Office

INGLEWOOD
Inn/Hotel
Lovell's Bakery

KERSBROOK
Thrifty-Link Hardware

LENSWOOD
General Store

LITTLEHAMPTON
Shell
Klose's Supermarket

LOBETHAL
Fodder Store
Newsagency
Onkaparinga Meats
Klose's Supermarket
Amberlight Deli

MT PLEASANT
Bakery & General Store
Post Office
Lovell's Bakery

MT TORRENS
General Store / Post Office

NAIRNE
Corner Takeaway
Klose's Supermarket

NORTON SUMMIT
Community Centre

OAKBANK
Pizza Bar
Chaff and Fodder

URAILDA
Friendly Grocer

WILLIAMSTOWN
Bakery

WOODSIDE
Motors / AMPOL
Newsagency
Klose's Supermarket
Dunn's of Woodside (Butcher)
Lovell's Bakery
Positive Aging Centre

\$5 Classifieds

COMING EVENTS



Home | T Junction
tjunction.wixsite.com

T-JUNCTION - LIVE MUSIC for your next event - specialising in weddings, birthdays (18th to 80th) or ticketed fund-raisers. Please call Terry to discuss 0408 818 293 (Scan QR Code)

POP UP Vintage OPEN Sunday 6th March to coincide with **DISCOVER PLAY BIKE-WAY 2022**, 10 am - 4 pm, 18 Tuck Street, Mt Torrens. Ceramics - Retro - Glassware - Kitchenalia & More. Card Facilities Avail. Instagram @popupvintagebyellen



Open Every Saturday 8am - 12 noon. Mt Pleasant Showground. Fresh Local Produce. Friendly Stall Holders. Gourmet breakfasts & espresso coffee. Check out our Instagram & FB pages! @mountpleasantfarmersmarketau

Advertise here \$5 for 30 words \$8.50 with logo/photo.

EMAIL YOUR COPY TO: editor@alongthegrapevine.com

COURSES, PROGRAMS & CLASSES

MUSIC LESSONS, KERSBROOK. Piano/Keyboard/Music Theory. Dawn Cowling. Associate member of the Music Teachers Association of SA. 0427 170 082



EXPERIENCED MUSIC TEACHER - PIANO AND KEYBOARD LESSONS. Including Theory Of Music. Children from 7 Years. All Other Ages Welcome. Please Phone Janet on 0477 887 588

Advertise here \$5 for 30 words \$8.50 with logo/photo.

EMAIL YOUR COPY TO: editor@alongthegrapevine.com

FOR HIRE or RENT



Gumeracha Town Hall is available for Hire for your Function! Please contact Mr RJ Brooksby OAM on 8389 1418 for details.

Hall for Hire. Consider the RSL Hall, Wattle Street, Lobethal. Competitive hall hire rates, new Diggers kitchen, new equipment and amenities, air conditioned. Bookings - Jo Kirlew: 0418 194 408

TRADES & SERVICES



MURPHY FRAMING, Birdwood. Artwork, 3D objects, Needlework, Mats. 600+ frame choices. Conservation options. Easier selection - Visualisation program gives completed frame preview. **WATER COLOUR CLASSES,** Beginners Welcome. Enquiries: 0402 594 354

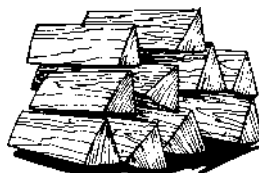
Hills Fencing - We supply quality affordable fencing throughout the hills and surrounding areas. Custom designed timber gates and entrances. Horse arena mirrors, horse yards, paddocks and all general timber and wire fencing. Retaining walls, picket and paling fences. Tight access mini digger for post hole drilling/trenching, bucket work/site clean up. **Phone Wayne Coping on 0428 821 005**



★★★★★★★★★
Supreme Painting
35 years experience. Prompt and Reliable. Interior and Exterior. Wallpaper removed. Colour Consultant. Quality service. Seniors Discount. Free quotes. Lic 19836. Mobile 0419 848 339
★★★★★★★★★



HOWES PAINTING — 40 years experience! Residential, Commercial, Maintenance, FREE QUOTES. Phone Terry on 0413 277 172



Sick of splitting Firewood? I will come to your property to cut and/or split your felled/fallen or salvaged wood. Call Angus on 0412 395 017. Fully Insured.



Adelaide Hills Headlight Polishing. Does your car have cloudy or faded headlights? Your safety and clear vision is paramount! Call Eddie on 0466 588 765 - I come to you! **Special offer starts from \$69.99 for both headlights.**



GREENIE'S Small Engine Repairs. Service & Repairs to: Lawnmowers, Ride-ons, Brush Cutters, Chain Saws, Water Pumps etc. Phone Graham Green, 0428 891 542. 3 Smithers Court, Kersbrook.



Support for individuals and families experiencing financial difficulties residing in the Adelaide Hills. Access to pantry items, bread and fresh produce. Provision of food & fuel vouchers. Part bill payments and school costs. No Interest Loans available. Call 8339 4400, 1 Euston Road, Aldgate



FIREWOOD MADE EASY. 10 years experience splitting/cutting wood. Servicing Adelaide Hills area, using quality machinery, no job too big or small. Call Geoff: 0409 001 421



CAMERON TOOLS

Specialising in Quality Australian Made & European Tools. BACK TO WORK TOOLS & EQUIPMENT SALE - Abbott & Ashby Bench Grinders, Stahlwille Hand Tools, Koken Z-Series Sockets & Ratchets, Telwin Battery Chargers, Sando Sledge Hammers, Thor Hammers & Mallets, Maun Parrallel Action Pliers, Marshalltown Concreting Tools. info@camerontools.com.au Phone 0455 838 880 camerontools.com.au

ALL AREAS ELECTRICAL S.A. Call us for your FREE quote. Specialising in ceiling fans, Split systems air-conditioning, general power & lighting. No job too small! Facebook or 0408621424

TRADES & SERVICES GUIDE



BUILDING DESIGN & ARCHITECTURAL DRAFTING

COUNCIL PLANS & APPLICATIONS
DESIGNING PLACES
0424 364436
Carpentry / Building reg.
BLD283020
www.designingplaces.com.au

Jim Rigby Concreting & Paving

- Driveways
 - Shed Floors
 - House Foundations
 - Retaining Walls
- Adelaide Hills,
Barossa, Fleurieu
& Murraylands
M: **0408 081 588**
FREE QUOTES



✓ SITE CUTS **✓ LANDSCAPE PREP**
✓ DRIVEWAYS **✓ SITE CLEANUP**
✓ HOLE BORING **✓ QUARRY PRODUCTS**
✓ TRENCHING **✓ LASER LEVELLING**

Call Michael ~ 0412 120 557
Free quotes. Full insurance coverage. www.mjdbobcat.com.au

JURY'S LIQUID WASTE

SEPTIC TANKS | HOLDING TANKS
RAINWATER TANKS
WIREY WASTE | GREASE TRAPS
PORTABLE TOILETS
BIO CYCLE & BI TREAT
CLEANING SPECIALISTS

Ph: 8563 9190
Mob: 0407 603 558



Discover Play Bikeway!

Discover the Amy Gillett Bikeway with the ultimate FREE day of fun for the whole family!

Sunday 6 March 2022
10am to 4pm
Oakbank to Mt Torrens
ahc.sa.gov.au



*** ADELAIDE * FRINGE * 2022**
16 FEBRUARY - 20 MARCH
adelaidefringe.com.au



Advertise HERE

IN COLOUR
from as little as
\$40
per issue!
0419 034 126

Woodside SELF STORAGE

Sizes from 9m²
Reasonable Rates
Phone Melissa - BH Partners
0438 252 207
8389 4133

NEED HELP AROUND THE HOME?

Philip Geeson Handyman Services

- Gutter cleaning
 - Painting & Wallpapering
 - Flat Pack Assembly
 - Installation of Shelves
 - Minor Plumbing, Brickwork and Plaster Repairs
- PLUS MUCH MORE!**

Ph: **0435 981 988**
philgeeson25@gmail.com

No obligation advice
and free quotes!

Haynes Plumbing

Kersbrook

- General Maintenance
- Guttering Repairs
- Drains & Septic Systems
- Hot Water Repairs & Replacements
- New & Renovation Work

Phone Tony
0408 056 155

New Rubble Driveways Constructed

Old Driveways Repaired

General Earthmoving

Call Phil on
0408 083 488

HILLS BRAKES CLUTCH AND SUSPENSION

JOHN RICE

Est. 1995
30+ years experience



Phone **8568 5314**
2912 Onkaparinga Valley Rd, Birdwood

BRAKE and SUSPENSION SPECIALIST

- * Spare Parts Supply or Supplied & Fitted
- * Wheel Alignment
- * Alignment Correction Kits
- * Suspension & Steering Repairs
- * 4WD Suspension and Lift Kits
- * Horse Float & Trailer Brakes
- * Under Car Repairs
- * Clutch Repairs
- * Disc & Drum Machining
- * CV Joint & Shaft Replacement
- * Shock Absorbers, Struts & Coil Overs
- * Re-sleeved Cylinders, bonded Shoes



IRONMAN DEALER



~ Automotive Batteries NOW AVAILABLE ~

STANDARD PASSENGER VEHICLES, 4WD, RESTORED VEHICLES, HOT RODS, STREET MACHINES, RACE-RALLY AND SPORTS CARS.